



To learn more, visit www.BeesMN.org

Bombus affinis Rusty Patched Bumble Bee

Bombus affinis is Minnesota's state bee and a federally endangered species, now absent from most of its eastern North American range. Populations persist in central and southeastern Minnesota.

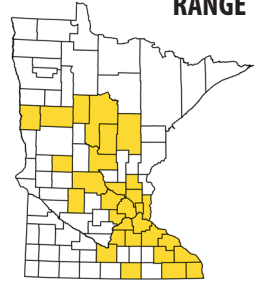
CONSERVATION STATUS

S2 imperiled

NEST

belowground
rodent/mammal burrows
on the ground
under debris or logs

RANGE

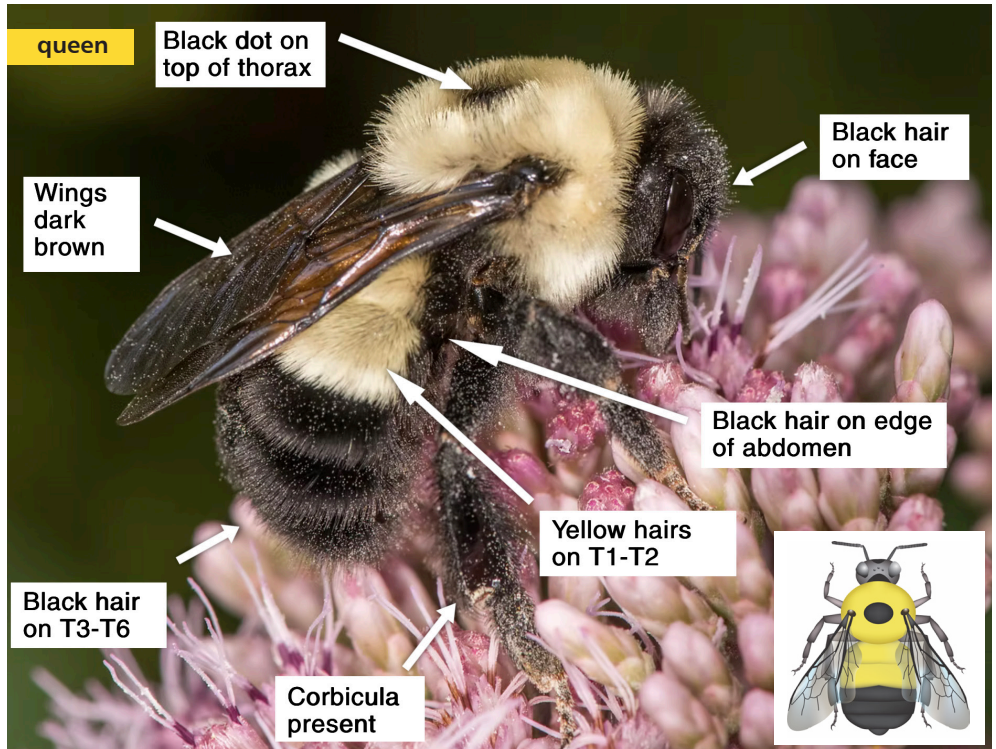


CHARACTERISTICS

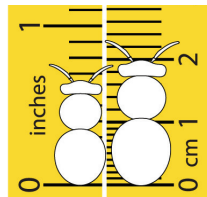
HEAD Males have scattered yellow hairs on the vertex (back of the head or "neck") and dark hairs on the face; queens and workers have dark hairs on the vertex and face.

THORAX Queens have a distinct black dot on the top of the thorax, workers a T-shaped black marking, and males a black T or broad band between the wing bases. All castes have dark brown wings.

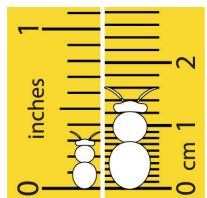
ABDOMEN Queens, males, and workers have yellow hairs on T1 and T2 and the remaining tergites have black hairs. In addition, workers and males have bright orange hairs on the base of the second tergite (T2).



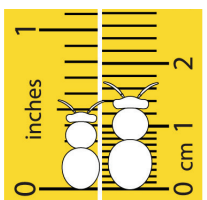
SIZE RANGE



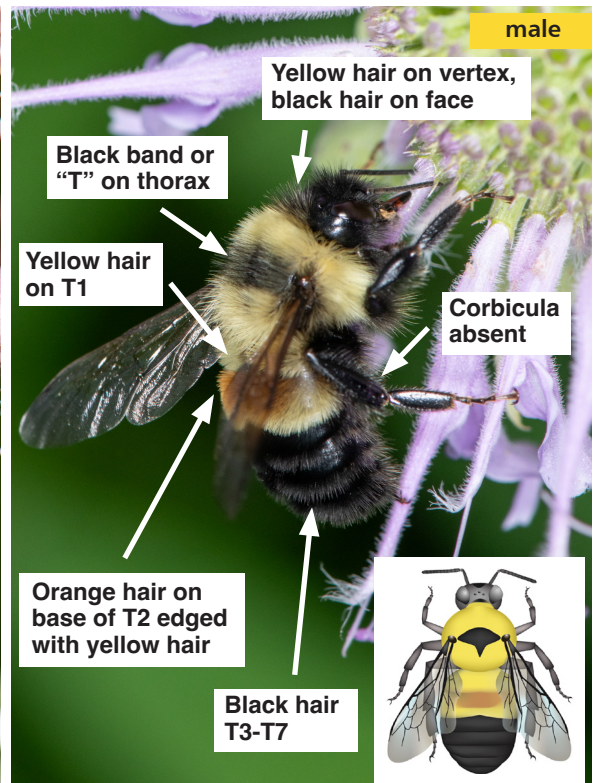
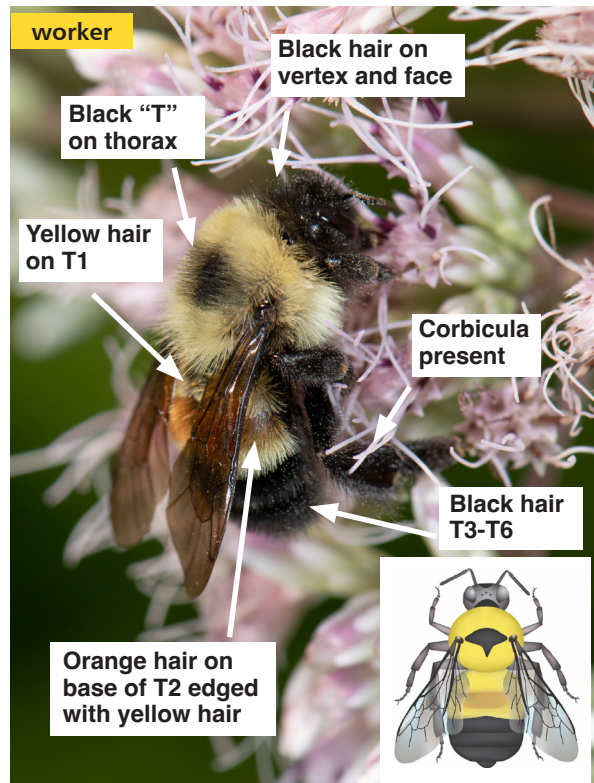
Queen



Worker



Male



Photos: Heather Holm

Bumble bee illustrations: Elaine Evans/Xerces Society



To learn more, visit
www.BeesMN.org

Bombus affinis

Rusty Patched Bumble Bee



Bombus affinis is a short-tongued bumble bee species. Males and workers rob nectar by chewing a hole at the base of long tubular flowers such as *Monarda*, providing an entry point for their tongue.

| ACTIVITY | nest duration | | | | | | |
|----------|-------------------------------------|-----|-----|-----|-----|-----|-----|
| | APR | MAY | JUN | JUL | AUG | SEP | OCT |
| queens | [Yellow bar from May to July] | | | | | | |
| workers | [Yellow bar from May to September] | | | | | | |
| males | [Yellow bar from June to August] | | | | | | |
| gynes | [Yellow bar from July to September] | | | | | | |

| SPRING | |
|---------------------|--|
| APRIL | <i>Vaccinium</i> Blueberry |
| | <i>Dicentra cucullaria</i> Dutchman's Breeches |
| | <i>Hydrophyllum virginianum</i> Virginia Waterleaf |
| | <i>Dodecatheon</i> Shooting Stars |
| | <i>Rubus occidentalis</i> Black Raspberry |
| | <i>Prunus americana</i> Wild Plum |
| MAY | <i>Mertensia virginica</i> Virginia Bluebells |
| EARLY TO MID-SUMMER | |
| JUNE | <i>Baptisia lactea</i> White Wild Indigo |
| | <i>Penstemon gracilis</i> Slender Beardtongue |
| | <i>Rosa arkansana</i> Prairie Rose |
| | <i>Asclepias tuberosa</i> Butterfly Milkweed |
| | <i>Phryma leptostachya</i> American Lopseed |
| | <i>Angelica atropurpurea</i> Angelica |
| | <i>Thalictrum dasycarpum</i> Tall Meadow Rue |
| | <i>Dalea</i> Prairie Clovers |
| | <i>Tradescantia ohiensis</i> Ohio Spiderwort |
| | <i>Cephalanthus occidentalis</i> Buttonbush |
| | <i>Agastache</i> Hyssops |
| | <i>Monarda fistulosa</i> Wild Bergamot |
| | <i>Monarda punctata</i> Dotted Horsemint |
| | <i>Tilia americana</i> American Basswood |
| | <i>Asclepias incarnata</i> Swamp Milkweed |
| | <i>Physalis heterophylla</i> Clammy Ground Cherry |
| | <i>Diervilla lonicera</i> Bush Honeysuckle |
| | <i>Allium cernuum</i> Nodding Onion |
| | <i>Eryngium yuccifolium</i> Rattlesnake Master |
| | <i>Desmodium canadense</i> Showy Tick-trefoil |
| | <i>Pycnanthemum virginianum</i> Virginia Mountain Mint |
| | <i>Veronicastrum virginicum</i> Culver's Root |
| | <i>Teucrium canadense</i> American Germander |
| | <i>Chamaecrista fasciculata</i> Partridge Pea |
| JULY | <i>Verbena hastata</i> Blue Vervain |
| | <i>Silphium perfoliatum</i> Cup Plant |
| LATE SUMMER-AUTUMN | |
| AUGUST | <i>Campanulastrum americanum</i> Tall Bellflower |
| | <i>Eupatorium perfoliatum</i> Common Boneset |
| | <i>Eutrochium</i> Joe Pye Weeds |
| | <i>Pedicularis lanceolata</i> Swamp Lousewort |
| | <i>Vernonia fasciculata</i> Common Ironweed |
| | <i>Ratibida pinnata</i> Yellow Coneflower |
| | <i>Cirsium discolor</i> Pasture Thistle |
| | <i>Liatris</i> Blazing Stars |
| | <i>Impatiens capensis</i> Spotted Touch-me-not |
| | <i>Lobelia siphilitica</i> Blue Lobelia |
| | <i>Physostegia virginiana</i> Obedient Plant |
| | <i>Helenium autumnale</i> Sneezeweed |
| OCTOBER | <i>Solidago, Euthamia</i> Goldenrods |
| | <i>Symphotrichum</i> Asters |



Hydrophyllum virginianum



Prunus americana



Agastache foeniculum



Monarda fistulosa



Diervilla lonicera



Veronicastrum virginicum



Verbena hastata



Cirsium discolor