



To learn more, visit www.BeesMN.org

Bombus perplexus Confusing Bumble Bee

Bombus perplexus generally occurs in the northern two-thirds of Minnesota and is infrequently observed in the Twin Cities metropolitan area.

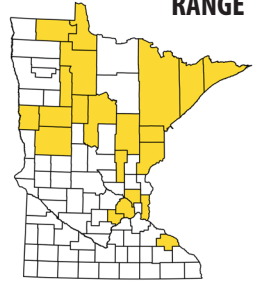
CONSERVATION STATUS

S4 apparently secure

NEST

on the ground
mouse nests, cavities
formed by objects

RANGE



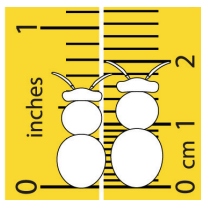
CHARACTERISTICS

HEAD For males, the third flagellum is three times as long as the scape, and the eyes are similarly-sized as females. Both males and females have yellow hairs on the vertex.

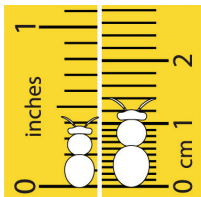
THORAX This species has variable color patterns. Consistent features include the thorax having long dark yellow or light orange hairs with no discernable dark hairs or defined spot in the center of the thorax, and females having dark hairs on the side of the thorax, below the wing bases.

ABDOMEN Females have yellow hairs on T1-T2, and for some females and all males, also on T3. Females can have white hairs on the apex of T5 and part of T6, males on T7.

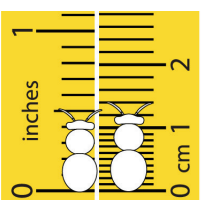
SIZE RANGE



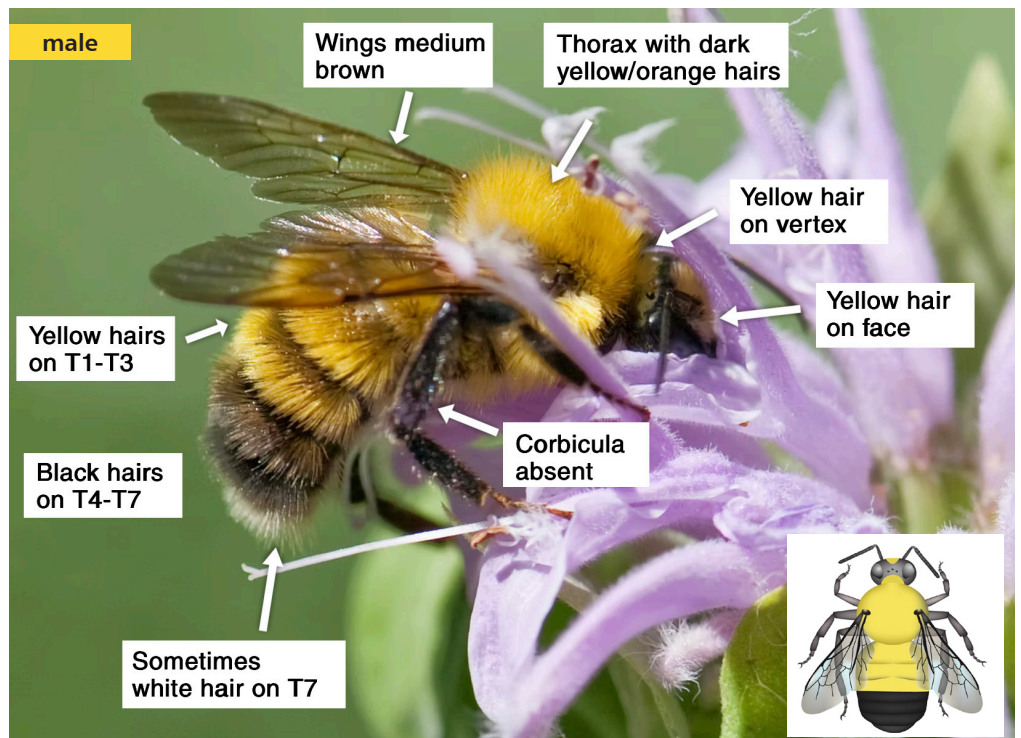
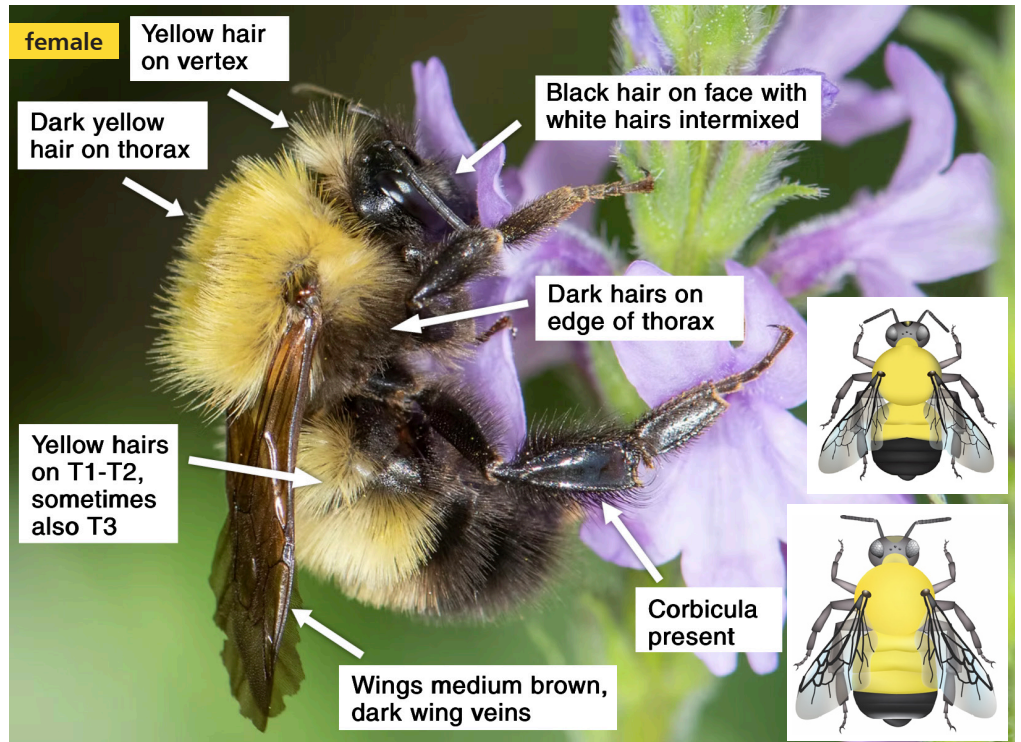
Queen



Worker



Male



Photos: Heather Holm

Bumble bee illustrations: Elaine Evans/Xerces Society



To learn more, visit www.BeesMN.org

Bombus perplexus Confusing Bumble Bee

Plant Associations

ACTIVITY	APR	MAY	JUN	JUL	AUG	SEP	OCT
queens	[Yellow bar]						
workers		[Yellow bar]					
males			[Yellow bar]				
gynes				[Yellow bar]			

Bombus perplexus is a medium-tongued bumble bee species. Flower preferences include milkweeds (*Asclepias*) and fireweed (*Chamaenerion*), as well as many plant genera in the family Asteraceae.

	SPRING	
APRIL	<i>Salix</i>	Willow
	<i>Ribes hirtellum</i>	Swamp Gooseberry
	<i>Vaccinium</i>	Blueberry
	<i>Rubus occidentalis</i>	Black Raspberry
MAY	<i>Rhododendron groenlandicum</i>	Labrador Tea
	EARLY TO MID-SUMMER	
JUNE	<i>Lonicera canadensis</i>	Fly Honeysuckle
	<i>Blephilia hirsuta</i>	Hairy Woodmint
	<i>Asclepias tuberosa</i>	Butterfly Milkweed
	<i>Rosa blanda</i>	Smooth Wild Rose
	<i>Clintonia borealis</i>	Bluebead Lily
	<i>Amorpha canescens</i>	Leadplant
	<i>Cephalanthus occidentalis</i>	Buttonbush
	<i>Achillea millefolium</i>	Common Yarrow
	<i>Agastache foeniculum</i>	Anise Hyssop
	<i>Apocynum androsaemifolium</i>	Spreading Dogbane
	<i>Monarda fistulosa</i>	Wild Bergamot
	<i>Thalictrum dasycarpum</i>	Tall Meadow Rue
	<i>Verbena stricta</i>	Hoary Vervain
	<i>Asclepias syriaca</i>	Common Milkweed
	<i>Diervilla lonicera</i>	Bush Honeysuckle
	<i>Dalea villosa</i>	Silky Prairie Clover
	<i>Spiraea alba</i>	White Meadowsweet
	<i>Asclepias incarnata</i>	Swamp Milkweed
	<i>Veronicastrum virginicum</i>	Culver's Root
	<i>Chamaenerion angustifolium</i>	Fireweed
	<i>Vernonia fasciculata</i>	Common Ironweed
JULY	<i>Verbena hastata</i>	Blue Vervain
	<i>Campanulastrum americanum</i>	Tall Bellflower
	LATE SUMMER-AUTUMN	
AUGUST	<i>Spiraea tomentosa</i>	Steeplebush
	<i>Eutrochium purpureum</i>	Sweet Joe Pye Weed
	<i>Silphium</i>	Prairie Dock, Rosinweed
	<i>Cirsium discolor</i>	Pasture Thistle
	<i>Liatris aspera</i>	Rough Blazing Star
	<i>Nabalus albus</i>	White Rattlesnake-root
	<i>Solidago, Euthamia</i>	Goldenrods
OCTOBER	<i>Symphotrichum</i>	Asters



Salix



Clintonia borealis



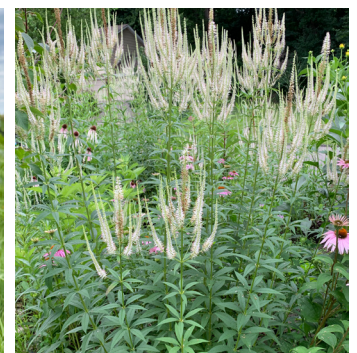
Cephalanthus occidentalis



Agastache foeniculum



Asclepias syriaca



Veronicastrum virginicum



Spiraea tomentosa



Liatris aspera

Photos: Heather Holm