



To learn more, visit www.BeesMN.org

Bombus auricomus Black and Gold Bumble Bee

Bombus auricomus is one of the largest bumble bees in Minnesota. It is common in the Twin Cities area but absent in northern Minnesota. Females closely resemble *B. pensylvanicus*.

CONSERVATION STATUS

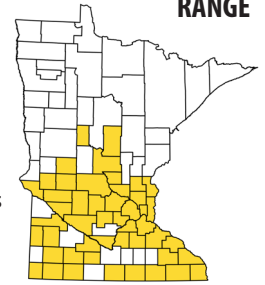
S5 secure

NEST

belowground
rodent/mammal burrows

aboveground
under debris or logs

RANGE



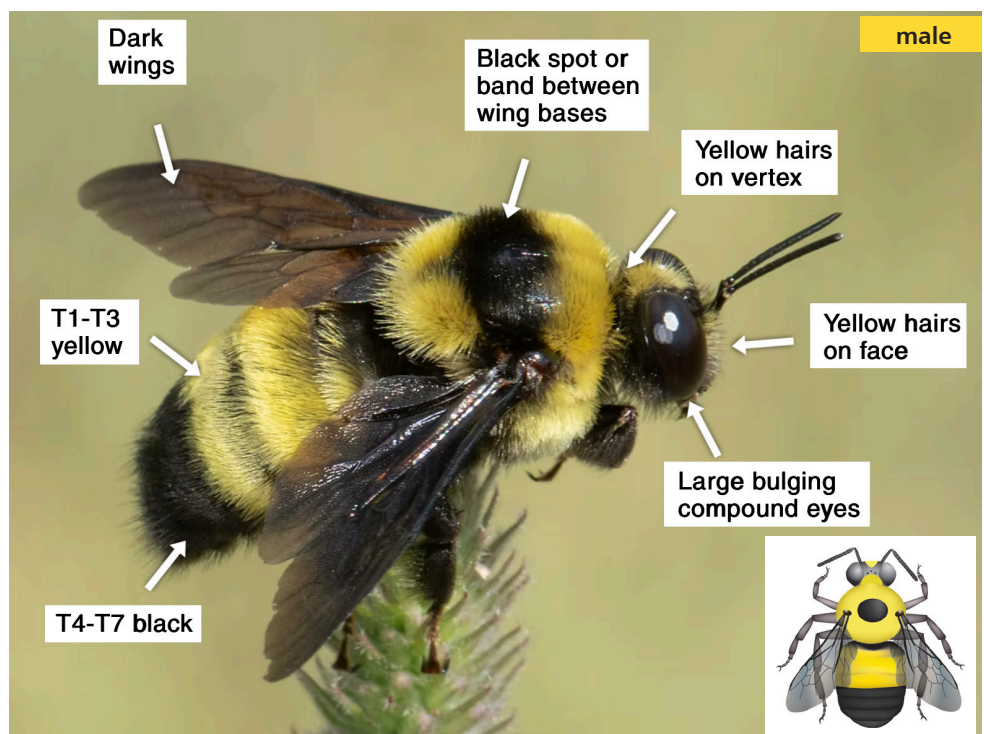
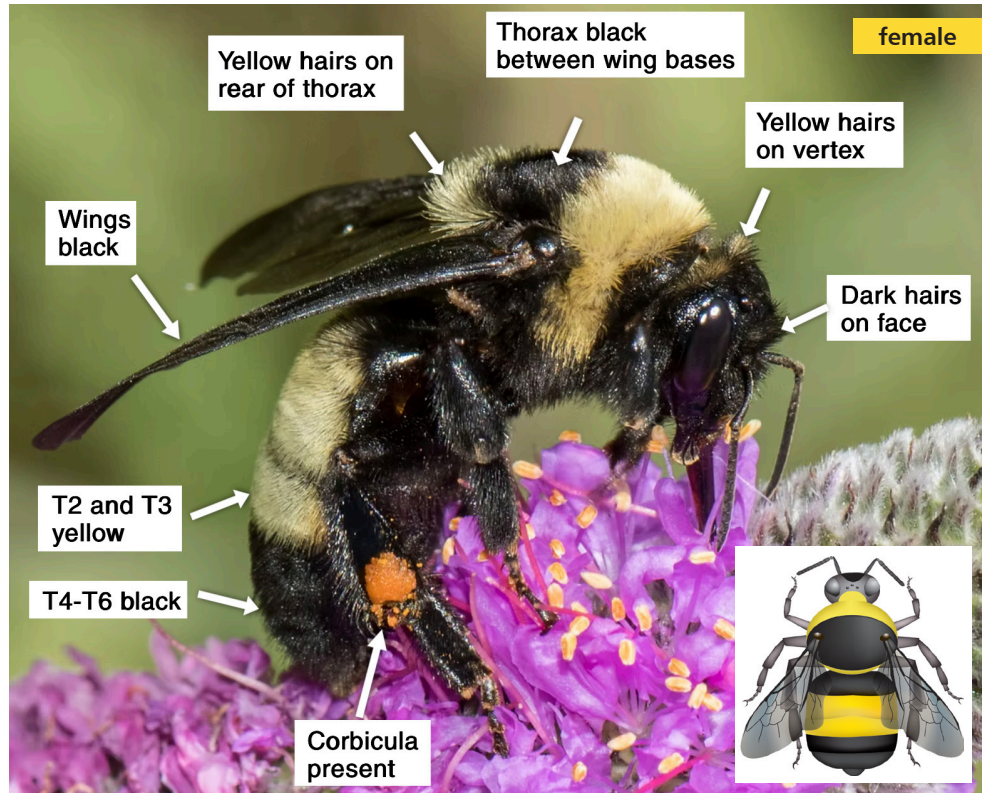
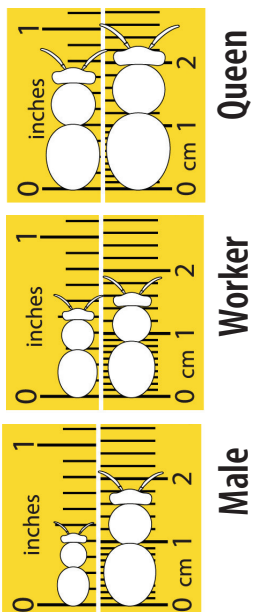
CHARACTERISTICS

HEAD Females have black hairs on the face; males have yellow hairs on the face. Males and females have yellow hairs on the vertex (back of the head or "neck"). This is one of several characteristics that can help separate females from *Bombus pensylvanicus* females. Males have large bulging compound eyes.

THORAX This species has short, even yellow hairs on the thorax and black hairs between the wing bases.

ABDOMEN For females, the first abdominal segment (T1) is either entirely black or with yellow hairs limited to the sides, T2 and T3 have yellow hairs. The rest of the remaining tergites (T4-T6) have black hairs. Males have yellow hairs on T1-T3 and black hairs on the remaining tergites (T4-T7). Males have dark wings; females have black wings.

SIZE RANGE



Photos: Heather Holm

Bumble bee illustrations: Elaine Evans/Xerces Society



To learn more, visit www.BeesMN.org

Bombus auricomus Black and Gold Bumble Bee

Plant Associations

ACTIVITY	nest duration							
	APR	MAY	JUN	JUL	AUG	SEP	OCT	
queens	[shaded]							
workers		[shaded]						
males			[shaded]					
gynes				[shaded]				

Bombus auricomus is a long-tongued bumble bee species that frequently visits complexly-shaped flowers such as *Penstemon*, *Astragalus*, and *Monarda*.

	SPRING		
APRIL	<i>Salix bebbiana</i>	Bebb's Willow	
	<i>Prunus americana</i>	Wild Plum	
	<i>Staphylea trifolia</i>	American Bladdernut	
	<i>Vaccinium</i>	Blueberry	
	<i>Polemonium reptans</i>	Jacob's Ladder	
	<i>Hydrophyllum virginianum</i>	Virginia Waterleaf	
	<i>Lupinus perennis</i>	Wild Lupine	
MAY	<i>Lithospermum canescens</i>	Hoary Puccoon	
	<i>Penstemon grandiflorus</i>	Large-flowered Beardtongue	
	<i>Heuchera richardsonii</i>	Prairie Alumroot	
	EARLY TO MID-SUMMER		
JUNE	<i>Blephilia hirsuta</i>	Hairy Woodmint	
	<i>Dalea purpurea</i>	Purple Prairie Clover	
	<i>Astragalus canadensis</i>	Canada Milkvetch	
	<i>Delphinium carolinum</i>	Carolina Larkspur	
	<i>Baptisia lactea</i>	White Wild Indigo	
	<i>Asclepias tuberosa</i>	Butterfly Milkweed	
	<i>Cephalanthus occidentalis</i>	Buttonbush	
	<i>Desmodium canadense</i>	Showy Tick-trefoil	
	<i>Agastache foeniculum</i>	Anise Hyssop	
	<i>Monarda fistulosa</i>	Wild Bergamot	
JULY	<i>Verbena stricta</i>	Hoary Vervain	
	<i>Ceanothus americanus</i>	New Jersey Tea	
	<i>Pycnanthemum virginianum</i>	Virginia Mountain Mint	
	<i>Veronicastrum virginicum</i>	Culver's Root	
	<i>Chamaecrista fasciculata</i>	Partridge Pea	
	<i>Heliopsis helianthoides</i>	False Sunflower	
		LATE SUMMER-AUTUMN	
AUGUST	<i>Eupatorium perfoliatum</i>	Common Boneset	
	<i>Eutrochium purpureum</i>	Sweet Joe Pye Weed	
	<i>Cirsium discolor</i>	Pasture Thistle	
	<i>Liatris aspera</i>	Rough Blazing Star	
	<i>Lobelia siphilitica</i>	Blue Lobelia	
	<i>Chelone glabra</i>	White Turtlehead	
	<i>Helianthus petiolaris</i>	Prairie Sunflower	
	<i>Physostegia virginiana</i>	Obedient Plant	
	OCTOBER	<i>Solidago, Euthamia</i>	Goldenrods



Prunus americana



Penstemon grandiflorus



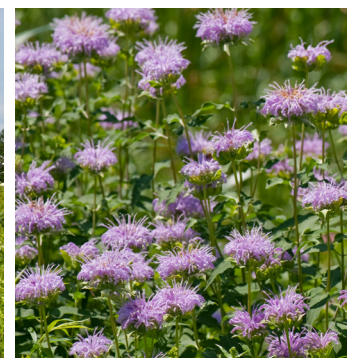
Dalea purpurea



Astragalus canadensis



Baptisia lactea



Monarda fistulosa



Cirsium discolor



Chelone glabra

Photos: Heather Holm