



To learn more, visit www.BeesMN.org

Bombus borealis

Northern Amber Bumble Bee

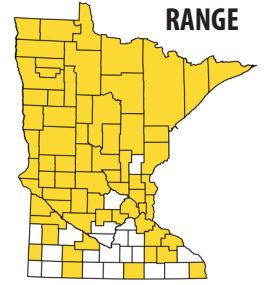
Bombus borealis generally occurs in the northern two-thirds of Minnesota, and is uncommon or absent in the southern third of the state. It closely resembles *Bombus fervidus*.

CONSERVATION STATUS

S5 secure

NEST

on the ground
under debris, rocks/logs



CHARACTERISTICS

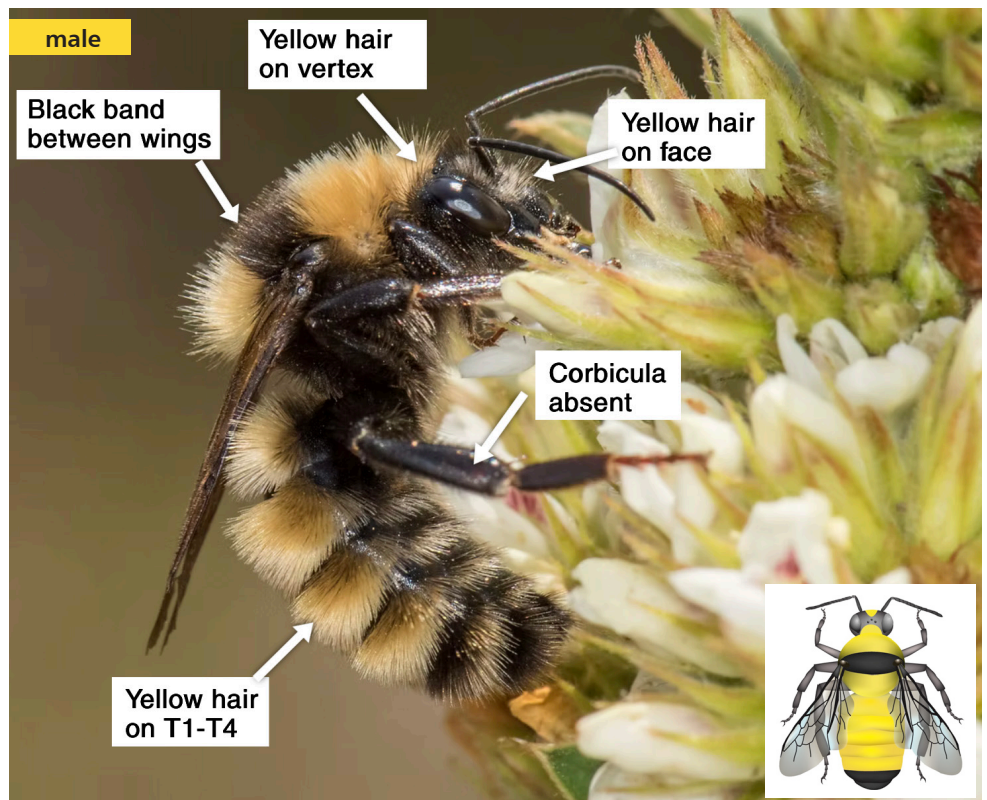
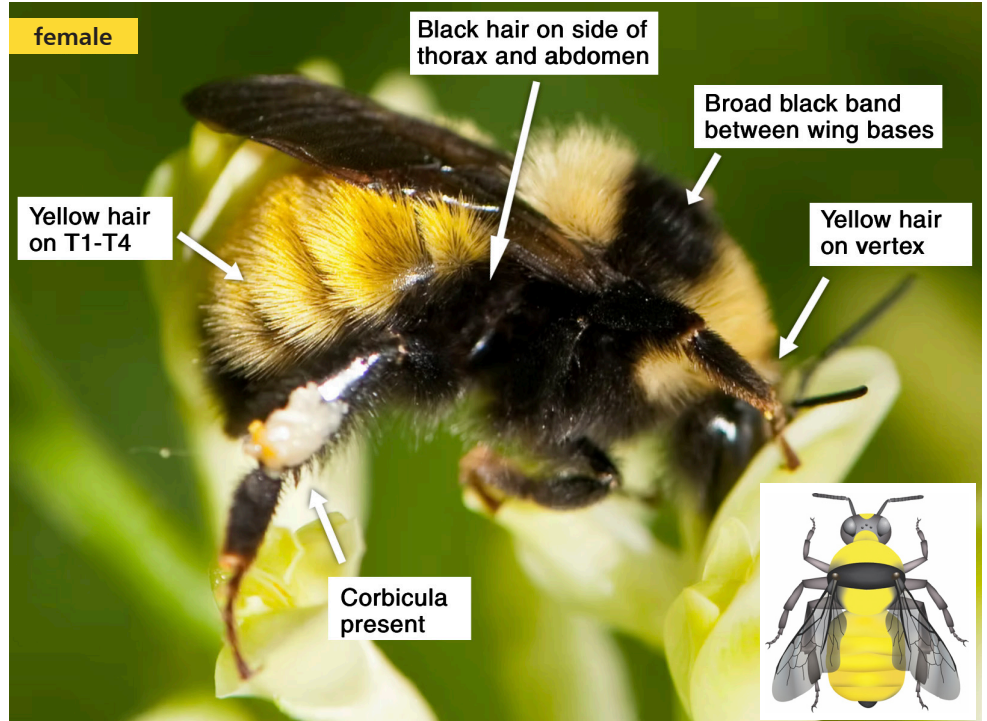
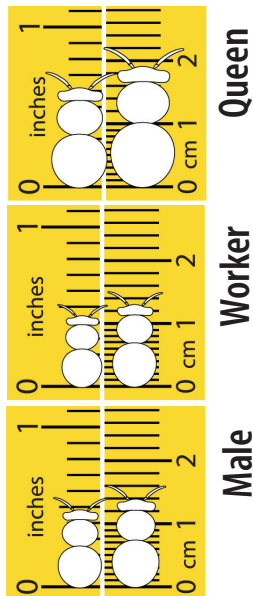
HEAD Both males and females have yellow hairs on the vertex (back of the head or "neck") and face. The malar space is longer than broad.

THORAX This species has light yellow hairs on the thorax with a black band between the wing bases (females and males). The wings are medium to dark brown.

ABDOMEN For males, the first through fourth tergites (T1-T4) have light yellow hairs, T5-T7 have black hairs. For females, T1-T4 (or sometimes T5) have light yellow hairs, and T6 has black hairs.

SIMILAR SPECIES *B. borealis* closely resembles *B. fervidus* but has a broader black band between the wings; yellow hairs on the vertex versus black hairs for *B. fervidus*; and black hairs on the side of the thorax versus yellow hairs for *B. fervidus* (females).

SIZE RANGE



Photos: Heather Holm

Bumble bee illustrations: Elaine Evans/Xerces Society



To learn more, visit www.BeesMN.org

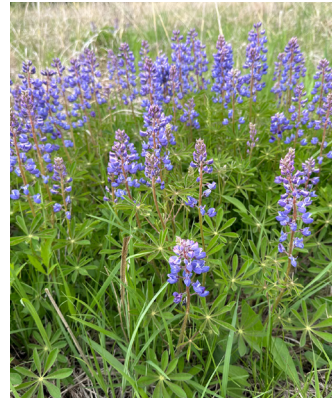
Bombus borealis

Northern Amber Bumble Bee



Bombus borealis is a long-tongued bumble bee species that frequently visits plants with long tubular flowers such as *Astragalus*, *Lobelia*, *Lithospermum*, and *Monarda*.

ACTIVITY	APR	MAY	JUN	JUL	AUG	SEP	OCT
queens			← nest duration →				
workers							
males							
gynes							



Lupinus perennis



Astragalus canadensis

	SPRING	
MAY	<i>Lupinus perennis</i>	Wild Lupine
	<i>Lithospermum canescens</i>	Hoary Puccoon
	<i>Penstemon grandiflorus</i>	Large-flowered Beardtongue
	<i>Pedicularis canadensis</i>	Wood Betony
	<i>Rubus occidentalis</i>	Black Raspberry
	EARLY TO MID-SUMMER	
JUNE	<i>Astragalus canadensis</i>	Canada Milkvetch
	<i>Rosa blanda</i>	Smooth Wild Rose
	<i>Asclepias tuberosa</i>	Butterfly Milkweed
	<i>Iris versicolor</i>	Blue Flag Iris
	<i>Antennaria neglecta</i>	Field Pussytoes
	<i>Dalea purpurea</i>	Purple Prairie Clover
	<i>Amorpha canescens</i>	Leadplant
	<i>Agastache foeniculum</i>	Anise Hyssop
	<i>Dalea villosa</i>	Silky Prairie Clover
	<i>Apocynum androsaemifolium</i>	Spreading Dogbane
	<i>Monarda fistulosa</i>	Wild Bergamot
	<i>Asclepias syriaca</i>	Common Milkweed
	<i>Verbena stricta</i>	Hoary Vervain
	<i>Monarda punctata</i>	Dotted Horsemint
	<i>Veronicastrum virginicum</i>	Culver's Root
	<i>Chamaenerion angustifolium</i>	Fireweed
	<i>Heliopsis helianthoides</i>	False Sunflower
	LATE SUMMER-AUTUMN	
JULY	<i>Spiraea tomentosa</i>	Steeplebush
	<i>Eupatorium perfoliatum</i>	Common Boneset
	<i>Vernonia fasciculata</i>	Common Ironweed
	<i>Eutrochium purpureum</i>	Sweet Joe Pye Weed
	<i>Lespedeza capitata</i>	Round-headed Bush Clover
	<i>Cirsium discolor</i>	Pasture Thistle
	<i>Lobelia siphilitica</i>	Blue Lobelia
	<i>Chelone glabra</i>	White Turtlehead
	<i>Gentiana andrewsii</i>	Bottle Gentian
	<i>Physostegia virginiana</i>	Obedient Plant
	<i>Solidago, Euthamia</i>	Goldenrods
OCTOBER	<i>Symphyotrichum</i>	Asters



Apocynum androsaemifolium



Chamaenerion angustifolium



Eutrochium purpureum



Lespedeza capitata



Gentiana andrewsii



Symphyotrichum