



To learn more, visit www.BeesMN.org

Bombus ternarius Tricolored Bumble Bee

Bombus ternarius is one of the most commonly observed bumble bees in the northern two-thirds of Minnesota, and is generally absent in the south-western prairie biome.

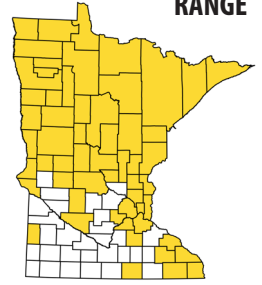
CONSERVATION STATUS

S5 secure

NEST

belowground
rodent/mammal burrows

RANGE



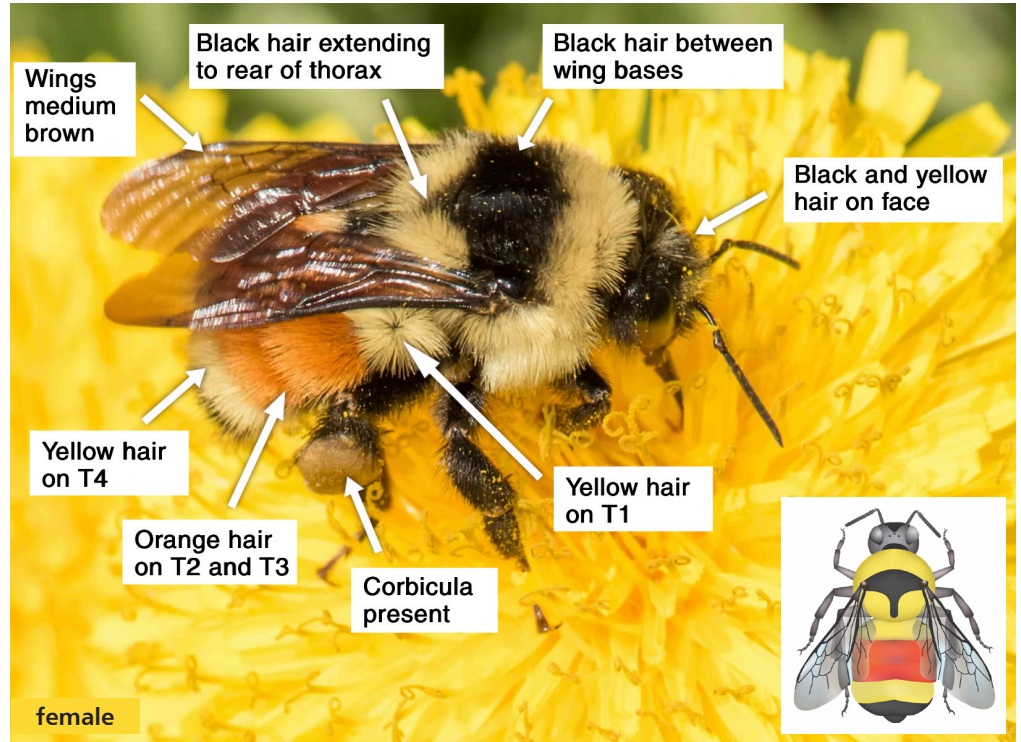
CHARACTERISTICS

HEAD Males have yellow hairs on the vertex (back of the head or "neck") and face; females have a mix of black and yellow hairs on the vertex and face.

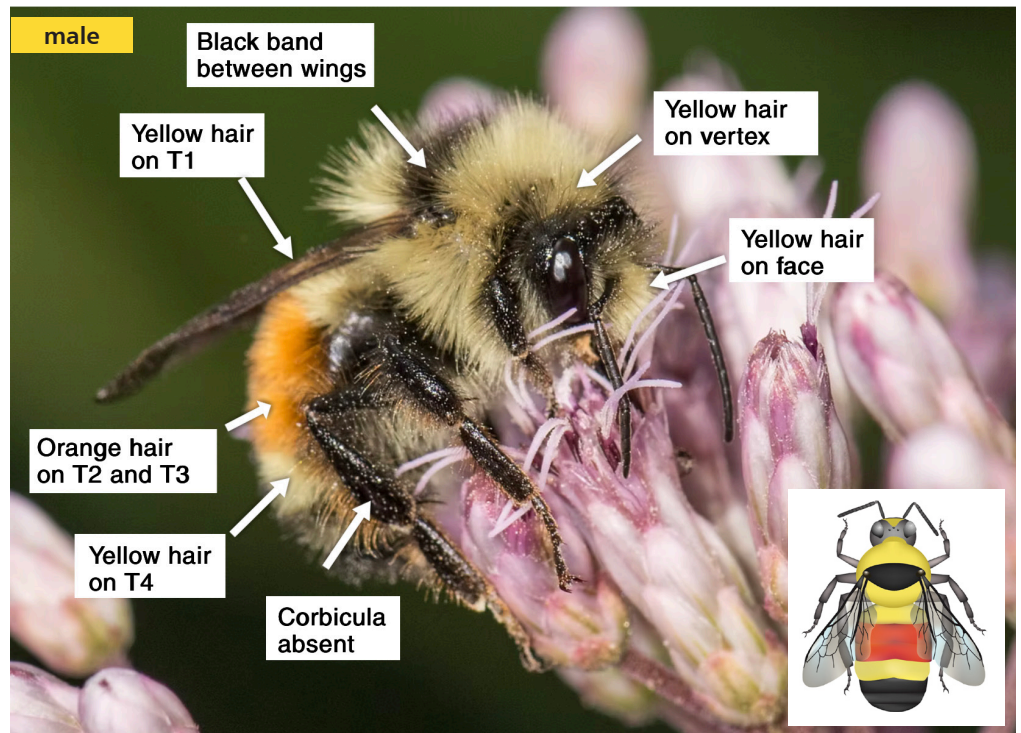
THORAX The thorax has a light yellow hairs with black hairs between the wing bases (females and males), and additional black extending in a T-shaped pattern down the back middle of the thorax (females). The wings are medium to dark brown.

ABDOMEN The first abdominal tergite (T1) has yellow hairs, T2 and T3 have bright orange hairs, T4 has yellow hairs, the remaining tergites have black hairs.

SIMILAR SPECIES *B. ternarius* strongly resembles a western species, *B. huntii*.

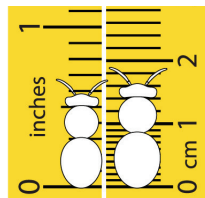


female

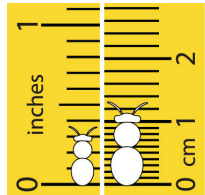


male

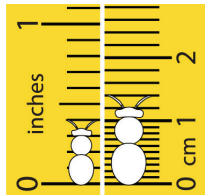
SIZE RANGE



Queen



Worker



Male

Photos: Heather Holm

Bumble bee illustrations: Elaine Evans/Xerces Society



To learn more, visit www.BeesMN.org

Bombus ternarius Tricolored Bumble Bee



Bombus ternarius is a medium-tongued bumble bee species. It can be found in a variety of habitats including bogs, open woodlands, prairies, and wetland edges.

ACTIVITY	APR	MAY	JUN	JUL	AUG	SEP	OCT
queens	[Yellow bar]						
workers		[Yellow bar]					
males			[Yellow bar]				
gynes				[Yellow bar]			



Vaccinium



Pedicularis canadensis

	SPRING	
APRIL	<i>Ribes</i>	Currants, Gooseberries
	<i>Vaccinium</i>	Blueberry
	<i>Pedicularis canadensis</i>	Wood Betony
	<i>Lithospermum canescens</i>	Hoary Puccoon
	<i>Rhododendron groenlandicum</i>	Labrador Tea
MAY	<i>Heuchera richardsonii</i>	Prairie Alumroot
	EARLY TO MID-SUMMER	
	<i>Asclepias tuberosa</i>	Butterfly Milkweed
	<i>Rosa blanda</i>	Smooth Wild Rose
	<i>Dalea purpurea</i>	Purple Prairie Clover
	<i>Physocarpus opulifolius</i>	Ninebark
	<i>Amorpha canescens</i>	Leadplant
	<i>Agastache foeniculum</i>	Anise Hyssop
	<i>Apocynum androsaemifolium</i>	Spreading Dogbane
	<i>Monarda fistulosa</i>	Wild Bergamot
	<i>Asclepias syriaca</i>	Common Milkweed
	<i>Diervilla lonicera</i>	Bush Honeysuckle
	<i>Ceanothus americanus</i>	New Jersey Tea
	<i>Spiraea alba</i>	White Meadowsweet
	<i>Pycnanthemum virginianum</i>	Virginia Mountain Mint
	<i>Veronicastrum virginicum</i>	Culver's Root
	<i>Heliopsis helianthoides</i>	False Sunflower
	<i>Mentha arvensis</i>	Wild Mint
	<i>Verbena hastata</i>	Blue Vervain
	LATE SUMMER-AUTUMN	
	<i>Eupatorium perfoliatum</i>	Common Boneset
	<i>Eutrochium purpureum</i>	Sweet Joe Pye Weed
	<i>Liatris aspera</i>	Rough Blazing Star
	<i>Helianthus</i>	Sunflowers
	<i>Solidago, Euthamia</i>	Goldenrods
	<i>Symphotrichum</i>	Asters
JULY		
AUGUST		
OCTOBER		



Physocarpus opulifolius



Apocynum androsaemifolium



Spiraea alba



Diervilla lonicera



Eutrochium purpureum



Solidago rigida

Photos: Heather Holm