



To learn more, visit www.BeesMN.org

Bombus bimaculatus Two-spotted Bumble Bee

Bombus bimaculatus is one of the most commonly observed bumble bees in Minnesota. New queens (gynes) emerge in early spring; nest activity winds down in late August.

CONSERVATION STATUS

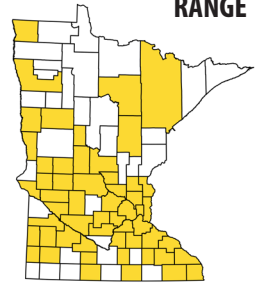
S5 secure

NEST

belowground
rodent/mammal burrows

aboveground
under leaf litter/debris

RANGE



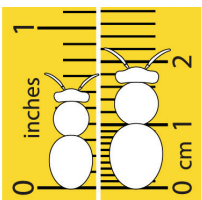
CHARACTERISTICS

HEAD Males and females have yellow hairs on the vertex (back of the head or "neck"). Females have dark hairs on the face, males have yellow hairs on the face.

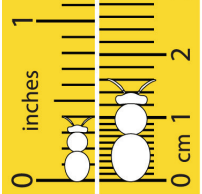
THORAX This bee has long light yellow hairs on the thorax with a distinct central black spot.

ABDOMEN The first abdominal tergite (T1) has yellow hairs; T2 has a W-shaped or two-lobed yellow marking. This marking on T2 is reduced on queens/gynes and can be difficult to see when obscured by the wings. For queens and workers, the remaining tergites have black hairs. Some males can also have additional yellow hairs on T4, see photo and illustration below.

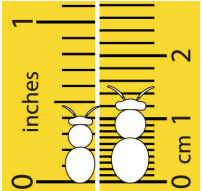
SIZE RANGE



Queen



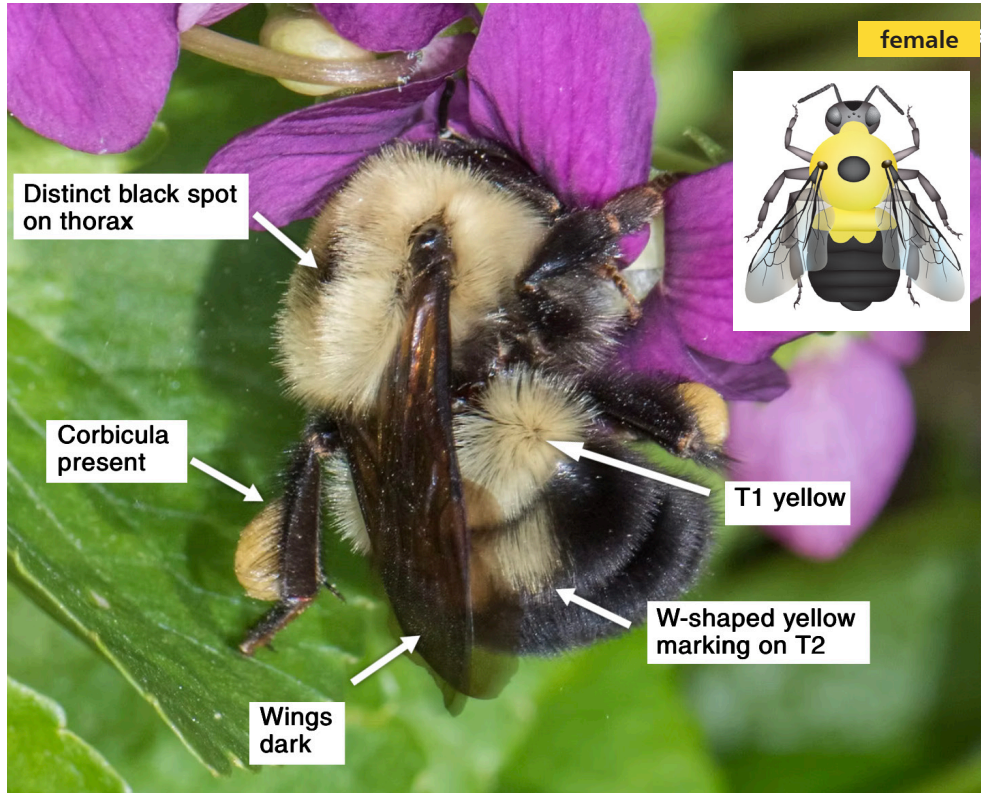
Worker



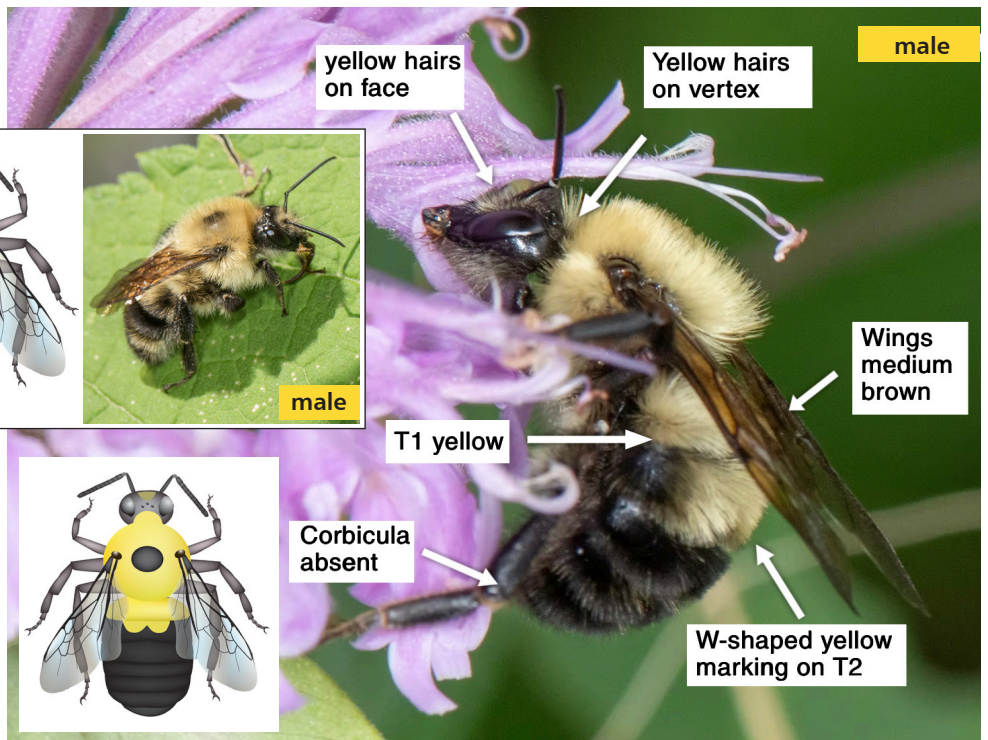
Male



male



female



male

Photos: Heather Holm

Bumble bee illustrations: Elaine Evans/Xerces Society



To learn more, visit www.BeesMN.org

Bombus bimaculatus Two-spotted Bumble Bee



Bombus bimaculatus is medium-tongued. It is usually the first bumble bee species to emerge in spring; look for new queens visiting early-blooming plants such as willow and gooseberry.

ACTIVITY	nest duration				AUG	SEP	OCT
	APR	MAY	JUN	JUL			
queens	[Yellow bar from APR to JUN]						
workers	[Yellow bar from APR to JUL]						
males		[Yellow bar from MAY to SEP]					
gynes		[Yellow bar from JUN to AUG]					
SPRING							
APRIL	<i>Salix discolor</i>		Pussy Willow				
	<i>Dicentra cucullaria</i>		Dutchman's Breeches				
	<i>Uvularia grandiflora</i>		Large-flowered Bellwort				
	<i>Ribes missouriense</i>		Missouri Gooseberry				
	<i>Prunus americana</i>		Wild Plum				
	<i>Viola</i>		Violets				
	<i>Vaccinium</i>		Blueberry				
	<i>Lupinus perennis</i>		Wild Lupine				
	<i>Hydrophyllum virginianum</i>		Virginia Waterleaf				
	<i>Geranium maculatum</i>		Wild Geranium				
	<i>Tradescantia bracteata</i>		Long-bracted Spiderwort				
	<i>Penstemon grandiflorus</i>		Large-flowered Beardtongue				
	<i>Zizia aurea</i>		Golden Alexander				
EARLY TO MID-SUMMER							
JUNE	<i>Rosa blanda</i>		Smooth Wild Rose				
	<i>Pontederia cordata</i>		Pickerelweed				
	<i>Scrophularia lanceolata</i>		Lance-leaved Figwort				
	<i>Blephilia hirsuta</i>		Hairy Woodmint				
	<i>Baptisia lactea</i>		White Wild Indigo				
	<i>Polygonatum biflorum</i>		Smooth Solomon's Seal				
	<i>Asclepias</i>		Milkweeds				
	<i>Dalea purpurea</i>		Purple Prairie Clover				
	<i>Astragalus canadensis</i>		Canada Milkvetch				
	<i>Cephalanthus occidentalis</i>		Buttonbush				
	<i>Desmodium canadense</i>		Showy Tick-trefoil				
	<i>Agastache foeniculum</i>		Anise Hyssop				
	<i>Monarda fistulosa</i>		Wild Bergamot				
	<i>Verbena stricta</i>		Hoary Vervain				
	<i>Eryngium yuccifolium</i>		Rattlesnake Master				
	<i>Diervilla lonicera</i>		Bush Honeysuckle				
	<i>Allium cernuum</i>		Nodding Onion				
	<i>Ceanothus americanus</i>		New Jersey Tea				
	<i>Pycnanthemum virginianum</i>		Virginia Mountain Mint				
	<i>Veronicastrum virginicum</i>		Culver's Root				
	<i>Chamaenerion angustifolium</i>		Fireweed				
	<i>Vernonia fasciculata</i>		Common Ironweed				
	<i>Heliopsis helianthoides</i>		False Sunflower				
LATE SUMMER							
AUGUST	<i>Eupatorium perfoliatum</i>		Common Boneset				
	<i>Liatris aspera</i>		Rough Blazing Star				
	<i>Physostegia virginiana</i>		Obedient Plant				
	<i>Silphium perfoliatum</i>		Cup Plant				
	<i>Solidago, Euthamia</i>		Goldenrods				



Dicentra cucullaria



Ribes missouriense



Zizia aurea



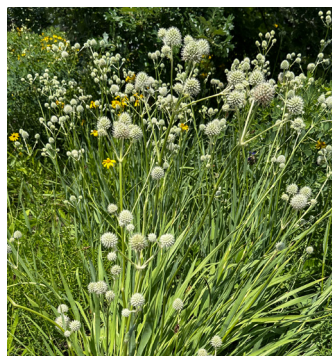
Baptisia lactea



Pontederia cordata



Asclepias incarnata



Eryngium yuccifolium



Ceanothus americanus