



To learn more, visit [www.BeesMN.org](http://www.BeesMN.org)

# *Bombus rufocinctus* Red-belted Bumble Bee

*Bombus rufocinctus* is a highly variable bumble bee species having multiple color patterns. The patterns also vary by region. The patterns depicted on this fact sheet reflect those in the Upper Midwest.

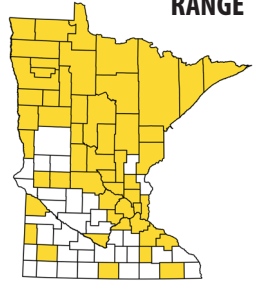
## CONSERVATION STATUS

**S5** secure

## NEST

**on the ground**  
abandoned mouse nests  
in long grass, in sheds,  
under a rock or log

## RANGE

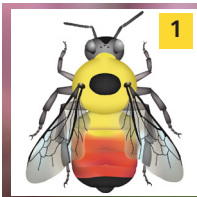


## FEMALE CHARACTERISTICS

**HEAD** All females have a short face and malar space, short body hairs, and yellow hairs on the vertex.

**THORAX** Females have a distinct black spot or oval between the wing bases and medium to dark brown wings.

**ABDOMEN** There are four coloration variations as follows. All variations have yellow hairs on the first and second tergite (T1 and T2) and orange or black hairs on the sides of T2:



female



T1: yellow hairs  
T2: yellow hairs basal half  
orange hairs apical half  
T3-T4: orange hairs  
T5-T6: black hairs

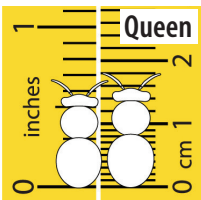


female

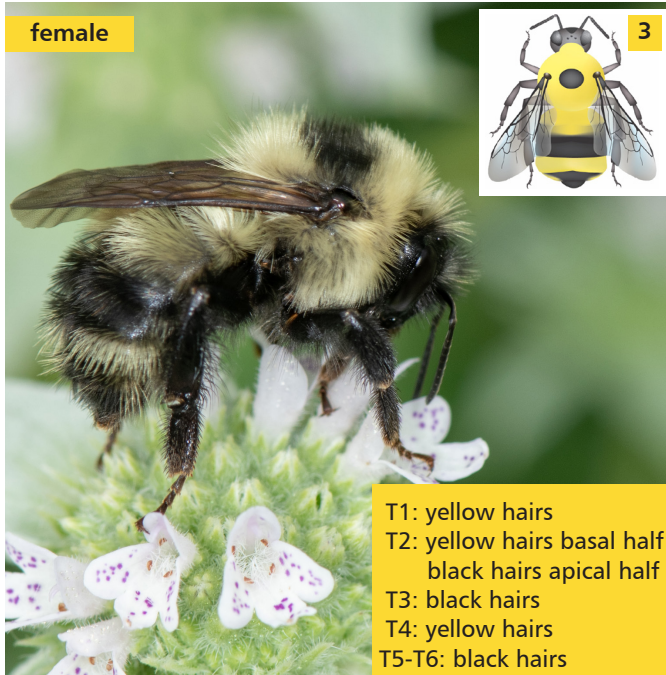


T1: yellow hairs  
T2: yellow hairs basal half  
orange hairs apical half  
T3: orange hairs  
T4: yellow hairs  
T5-T6: black hairs

## SIZE RANGE



female



T1: yellow hairs  
T2: yellow hairs basal half  
black hairs apical half  
T3: black hairs  
T4: yellow hairs  
T5-T6: black hairs



female



T1: yellow hairs  
T2: yellow hairs basal half  
black hairs apical half  
T3-T6: black hairs



Photos: Heather Holm

Bumble bee illustrations:  
Elaine Evans/Xerces Society



To learn more, visit [www.BeesMN.org](http://www.BeesMN.org)

# *Bombus rufocinctus* Red-belted Bumble Bee

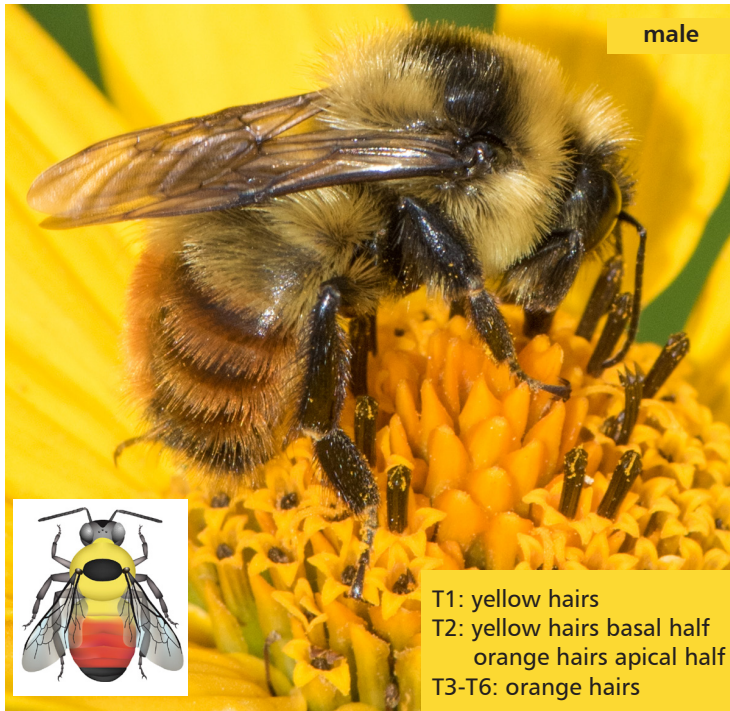
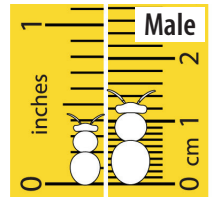
## MALE CHARACTERISTICS

**HEAD** Males have yellow hairs on the vertex and face.

**THORAX** Males have yellow hairs on the thorax and a black oval between the wing bases.

**ABDOMEN** Like females, males have a number of coloration patterns. All coloration patterns include yellow hairs on all of T1 and part or all of T2. T3 can be black, yellow, or orange. T4 black or orange. T5-T7 black, yellow, or orange. Note, orange hairs can fade to yellow making identification more difficult.

## SIZE RANGE



male

T1: yellow hairs  
T2: yellow hairs basal half  
orange hairs apical half  
T3-T6: orange hairs



male

T1-T3: yellow hairs  
T4-T7: orange hairs



male

T1-T2: yellow hairs  
T3-T7: black hairs  
fringe of yellow  
hairs on edges



male



male

T1-T2: yellow hairs  
T3-T4: orange hairs  
in middle  
T5-T7: yellow hairs



To learn more, visit [www.BeesMN.org](http://www.BeesMN.org)

# Bombus rufocinctus

## Red-belted Bumble Bee



ACTIVITY	nest duration						
	APR	MAY	JUN	JUL	AUG	SEP	OCT
queens		█	█	█			
workers		█	█	█	█	█	█
males				█	█	█	█
gynes					█	█	█

MAY		SPRING	
	↓	<i>Hydrophyllum virginianum</i>	Virginia Waterleaf
		<i>Lithospermum canescens</i>	Hoary Puccoon
		<i>Antennaria neglecta</i>	Field Pussytoes
		<i>Rubus occidentalis</i>	Black Raspberry
		<i>Geranium maculatum</i>	Wild Geranium
		<i>Zizia aurea</i>	Golden Alexander
		<i>Penstemon grandiflorus</i>	Large Beardtongue
JUNE		EARLY TO MID-SUMMER	
	↓	<i>Lupinus perennis</i>	Wild Lupine
		<i>Rosa blanda</i>	Smooth Wild Rose
		<i>Asclepias tuberosa</i>	Butterfly Milkweed
		<i>Blephilia hirsuta</i>	Hairy Woodmint
		<i>Cypripedium reginae</i>	Showy Lady's Slipper
		<i>Dalea purpurea</i>	Purple Prairie Clover
		<i>Scrophularia lanceolata</i>	Lance-leaved Figwort
		<i>Agastache foeniculum</i>	Anise Hyssop
		<i>Amorpha canescens</i>	Leadplant
		<i>Rhus glabra</i>	Smooth Sumac
		<i>Monarda fistulosa</i>	Wild Bergamot
		<i>Verbena stricta</i>	Hoary Vervain
		<i>Monarda punctata</i>	Dotted Horsemint
		<i>Achillea millefolium</i>	Common Yarrow
		<i>Asclepias syriaca</i>	Common Milkweed
		<i>Diervilla lonicera</i>	Bush Honeysuckle
		<i>Allium cernuum</i>	Nodding Onion
		<i>Apocynum androsaemifolium</i>	Spreading Dogbane
		<i>Veronicastrum virginicum</i>	Culver's Root
		<i>Thalictrum dasycarpum</i>	Tall Meadow Rue
		<i>Vernonia fasciculata</i>	Common Ironweed
		<i>Eryngium yuccifolium</i>	Rattlesnake Master
		<i>Rudbeckia hirta</i>	Black-eyed Susan
		<i>Pycnanthemum virginianum</i>	Virginia Mountain Mint
		<i>Heliopsis helianthoides</i>	False Sunflower
		<i>Verbena hastata</i>	Blue Vervain
		<i>Silphium perfoliatum</i>	Cup Plant
JULY		LATE SUMMER-AUTUMN	
	↓	<i>Spiraea alba</i>	White Meadowsweet
		<i>Eupatorium perfoliatum</i>	Common Boneset
		<i>Ratibida pinnata</i>	Yellow Coneflower
		<i>Physostegia virginiana</i>	Obedient Plant
		<i>Eutrochium purpureum</i>	Sweet Joe Pye Weed
		<i>Liatis aspera</i>	Rough Blazing Star
		<i>Helenium autumnale</i>	Sneezeweed
		<i>Solidago, Euthamia</i>	Goldenrods
		<i>Symphyotrichum</i>	Asters
AUGUST			
	↓		
OCTOBER			

*Bombus rufocinctus* is a short-tongued bumble bee species that frequently visits flowering plants with shallow nectaries such as those belonging to the family Asteraceae.



*Antennaria neglecta*



*Zizia aurea*



*Rosa blanda*



*Verbena stricta*



*Diervilla lonicera*



*Eryngium yuccifolium*



*Ratibida pinnata*



*Liatis aspera*

Photos: Heather Holm