



To learn more, visit [www.BeesMN.org](http://www.BeesMN.org)

# *Augochlora pura*

## Pure Green Metallic Sweat Bee

*Augochlora* is one of four metallic green sweat bee genera that occur in Minnesota and the only genus/species that nests in wood. All other metallic green sweat bees nest in the ground.

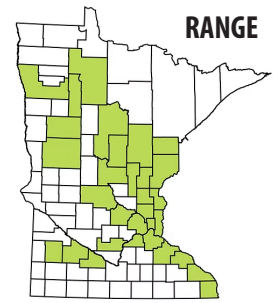
### CONSERVATION STATUS

**S4** apparently secure

### NEST

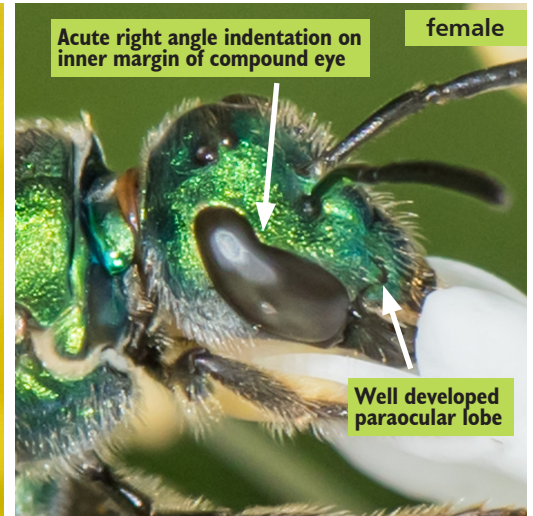
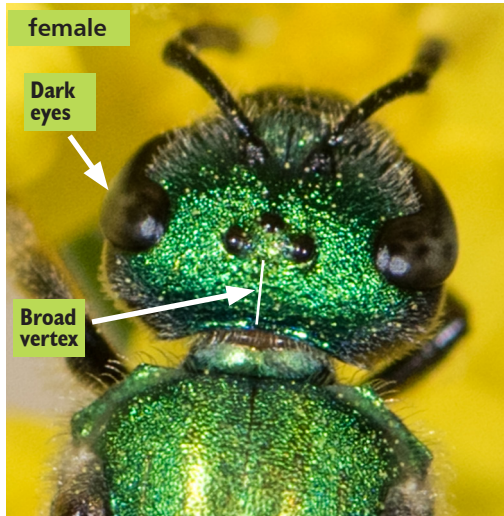
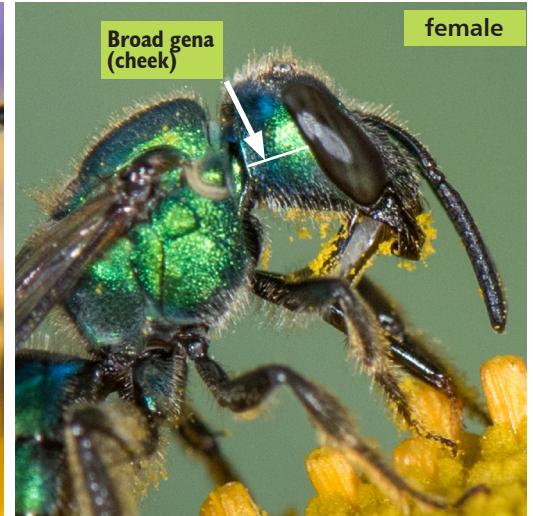
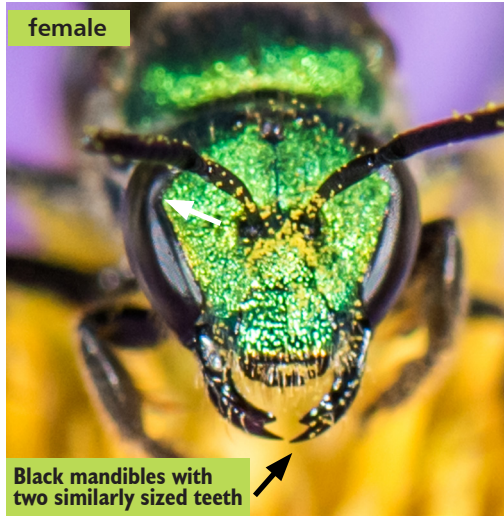
#### cavities in wood

logs on ground  
tree stumps  
in dead limbs



## CHARACTERISTICS

This species has a metallic green head, thorax, and abdomen; black mandibles with two similarly sized teeth; dark brown wings; a well developed paraocular lobe; sharp inner margins on the compound eyes; and a uniformly smooth scutum. Females have a central keel on the first sternite (S1) and dark legs; both males and females have a broad gena (cheek) and vertex (space between the simple eyes and back of the head).





To learn more, visit [www.BeesMN.org](http://www.BeesMN.org)

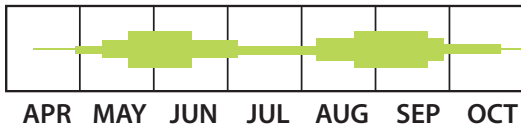
# Augochlora pura

Pure Green Metallic Sweat Bee



## Plant Associations

### ACTIVITY



*Augochlora pura* produces two generations per year; reproductive females overwinter as adults. Females emerge in spring and establish a nest in wood. Males produced from spring nests emerge in late summer. This species has two peak activity periods in early June and late August.



SPRING	
APRIL	<i>Prunus americana</i> Wild Plum
	<i>Rubus occidentalis</i> Black Raspberry
MAY	<i>Geranium maculatum</i> Wild Geranium
	<i>Polemonium reptans</i> Jacob's Ladder
EARLY TO MID-SUMMER	
JUNE	<i>Erigeron</i> Fleabanes
	<i>Zizia aurea</i> Golden Alexander
	<i>Cryptotaenia canadensis</i> Honewort
	<i>Asclepias tuberosa</i> Butterfly Milkweed
	<i>Agastache foeniculum</i> Anise Hyssop
	<i>Dalea candida</i> White Prairie Clover
	<i>Verbena stricta</i> Hoary Vervain
	<i>Veronicastrum virginicum</i> Culver's Root
JULY	<i>Heliopsis helianthoides</i> False Sunflower
	<i>Campanulastrum americanum</i> Tall Bellflower
LATE SUMMER-AUTUMN	
AUGUST	<i>Rudbeckia hirta</i> Black-eyed Susan
	<i>Symphoricarpos occidentalis</i> Wolfberry
	<i>Eutrochium purpureum</i> Sweet Joe Pye Weed
	<i>Chelone glabra</i> White Turtlehead
	<i>Ageratina altissima</i> White Snakeroot
	<i>Lobelia siphilitica</i> Blue Lobelia
	<i>Helenium autumnale</i> Sneezeweed
	<i>Solidago, Euthamia</i> Goldenrods
OCTOBER	<i>Symphyotrichum</i> Asters

Photos: Heather Holm