



To learn more, visit www.BeesMN.org

Bombus fervidus

Golden Northern Bumble Bee

Bombus fervidus occurs throughout much of Minnesota. However, it is generally uncommon or infrequently observed. This species closely resembles *Bombus borealis*. See details below.

CONSERVATION STATUS

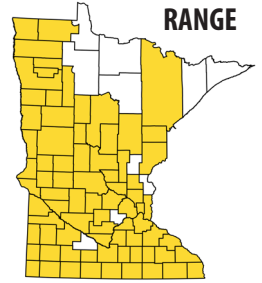
S3 vulnerable

NEST

on the ground
in long grass/prairies

belowground
rodent/mammal burrows

RANGE



CHARACTERISTICS

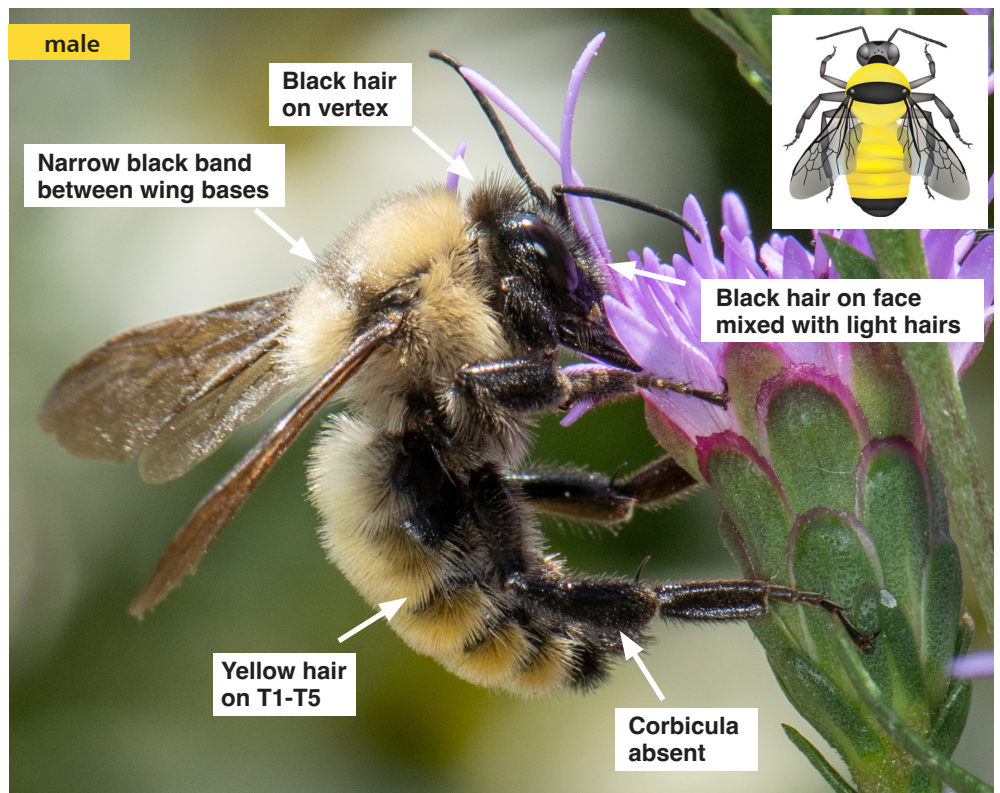
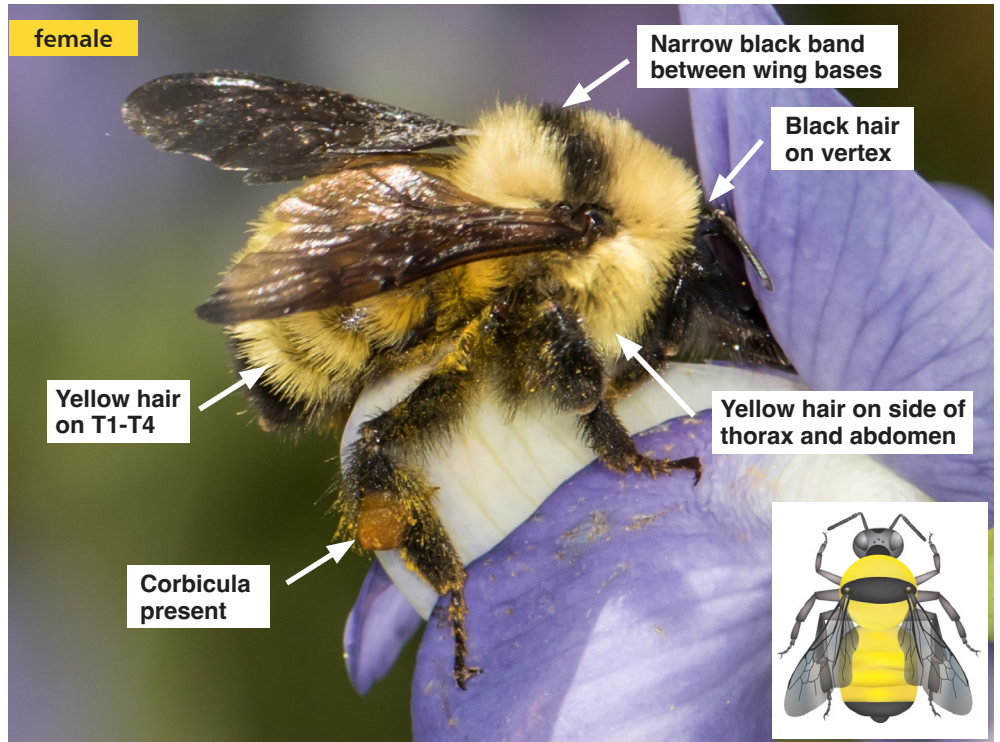
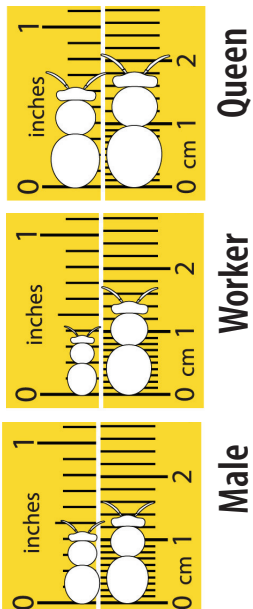
HEAD *Bombus fervidus* has a long face, and malar space that is longer than broad. Both males and females have black hairs on the vertex (back of the head or "neck") and face.

THORAX Males and females have even medium-length light yellow to yellow hairs on the thorax and black hairs between the wing bases.

ABDOMEN For males, the first through fifth abdominal tergites (T1-T5) have yellow hairs; T5-T7 have black hairs. For females, T1-T4 have yellow hairs, T5 and T6 have black hairs.

SIMILAR SPECIES *B. fervidus* closely resembles *B. borealis* but has a narrower black band between the wings; black hairs on the vertex versus yellow for *B. borealis*; and yellow hairs on the side of the thorax versus extensive black hairs for *B. borealis* (females).

SIZE RANGE



Photos: Heather Holm

Bumble bee illustrations: Elaine Evans/Xerces Society



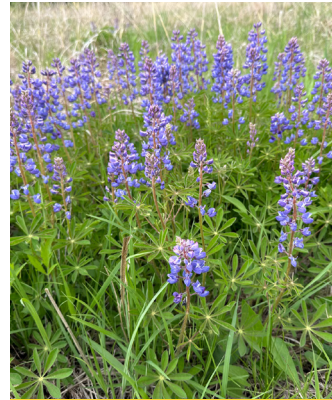
To learn more, visit www.BeesMN.org

Bombus fervidus Golden Northern Bumble Bee



Bombus fervidus is a long-tongued bumble bee species that frequently visits grassland plants with long tubular flowers such as *Delphinium*, *Monarda*, *Penstemon*, and *Onosmodium*.

ACTIVITY	APR	MAY	JUN	JUL	AUG	SEP	OCT
queens		[Yellow bar from May to Sep]					
workers			[Yellow bar from Jun to Aug]				
males				[Yellow bar from Jul to Sep]			
gynes				[Yellow bar from Jul to Sep]			



Lupinus perennis



Penstemon gracilis

	SPRING	
MAY	<i>Viola</i>	Violets
	<i>Lupinus perennis</i>	Wild Lupine
	<i>Pedicularis canadensis</i>	Wood Betony
	<i>Lithospermum canescens</i>	Hoary Puccoon
	<i>Dodecatheon meadia</i>	Prairie Shooting Star
	<i>Penstemon grandiflorus</i>	Large-flowered Beardtongue
	EARLY TO MID-SUMMER	
JUNE	<i>Astragalus canadensis</i>	Canada Milkvetch
	<i>Penstemon gracilis</i>	Slender Beardtongue
	<i>Baptisia lactea, leucophaea</i>	White and Cream Wild Indigo
	<i>Aquilegia canadensis</i>	Wild Columbine
	<i>Vicia americana</i>	American Vetch
	<i>Asclepias tuberosa</i>	Butterfly Milkweed
	<i>Delphinium carolinum</i>	Carolina Larkspur
	<i>Dalea purpurea</i>	Purple Prairie Clover
	<i>Onosmodium bejariense</i>	False Gromwell
	<i>Castilleja coccinea</i>	Indian Paintbrush
	<i>Amorpha canescens</i>	Leadplant
	<i>Agastache foeniculum</i>	Anise Hyssop
	<i>Desmodium canadense</i>	Showy Tick-trefoil
	<i>Monarda fistulosa</i>	Wild Bergamot
	<i>Diervilla lonicera</i>	Bush Honeysuckle
	<i>Monarda punctata</i>	Dotted Horsemint
	<i>Veronicastrum virginicum</i>	Culver's Root
	<i>Mimulus ringens</i>	Allegheny Monkey Flower
	<i>Teucrium canadense</i>	American Germander
	<i>Heliopsis helianthoides</i>	False Sunflower
	LATE SUMMER-AUTUMN	
AUGUST	<i>Liatris cylindracea</i>	Cylindric Blazing Star
	<i>Vernonia fasciculata</i>	Common Ironweed
	<i>Cirsium discolor</i>	Pasture Thistle
	<i>Lobelia siphilitica</i>	Blue Lobelia
	<i>Gentiana andrewsii</i>	Bottle Gentian
	<i>Physostegia virginiana</i>	Obedient Plant
	<i>Solidago, Euthamia</i>	Goldenrods
OCTOBER	<i>Symphotrichum</i>	Asters



Delphinium carolinum



Onosmodium bejariense



Castilleja coccinea



Amorpha canescens



Liatris cylindracea



Gentiana andrewsii