



To learn more, visit www.BeesMN.org

Bombus citrinus

Lemon Cuckoo Bumble Bee

Bombus citrinus is a social parasite. Females take over an active *Bombus* host nest then coerce the host's workers to help them rear their offspring. Hosts include *B. impatiens*, *B. bimaculatus*, and *B. vagans*.

CONSERVATION STATUS

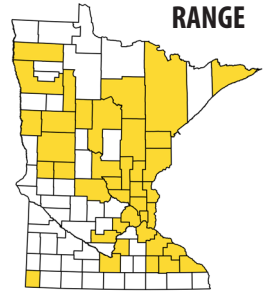
S4 apparently secure

NEST (HOST)

belowground
rodent/mammal burrows

on the ground
abandoned mouse nests

RANGE



CHARACTERISTICS

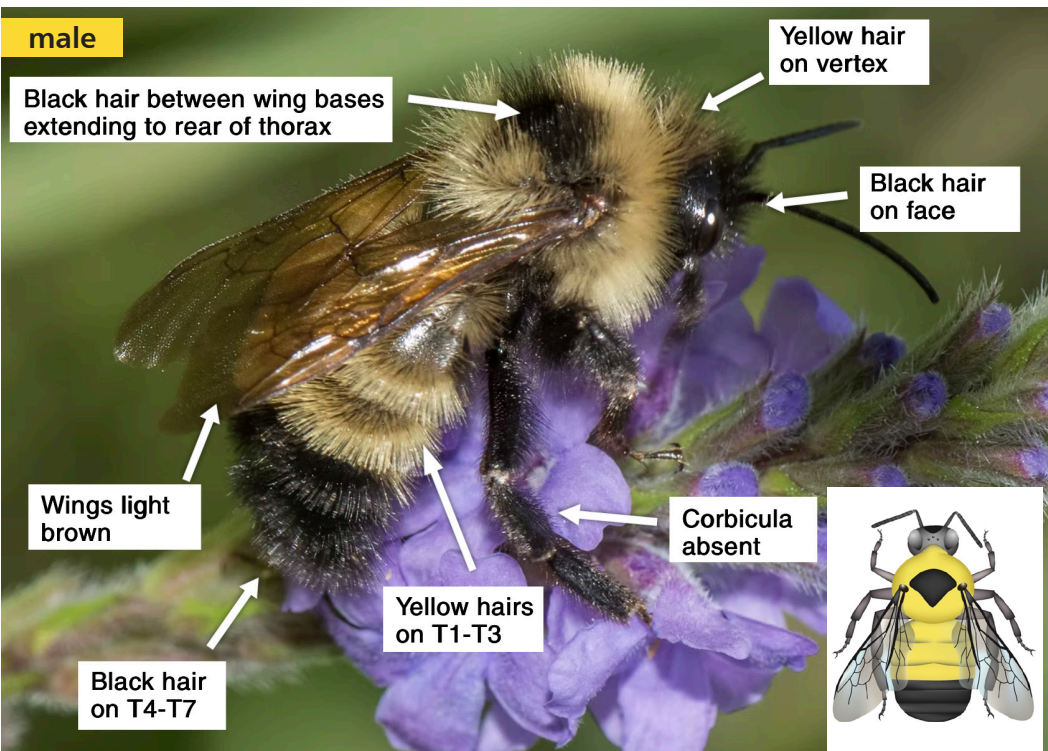
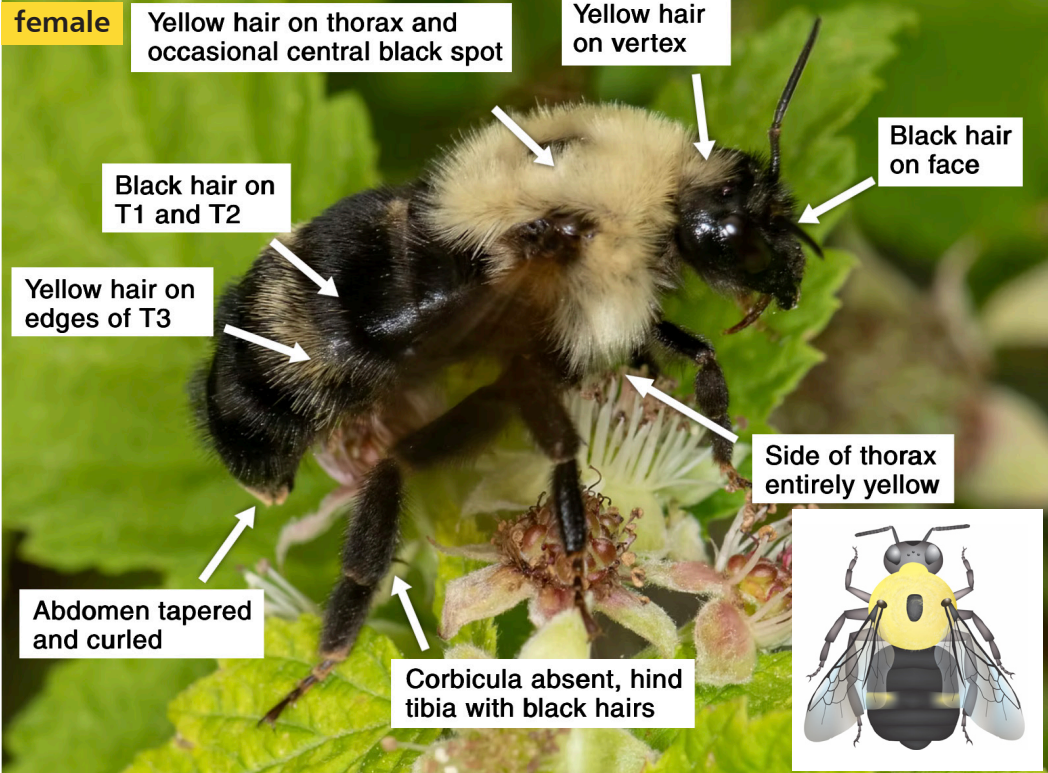
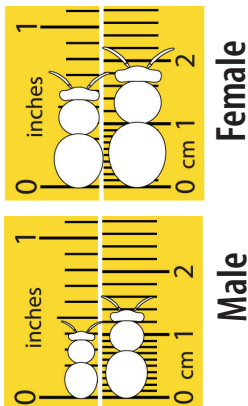
CUCKOO BEE TRAITS *Bombus citrinus* females lack corbiculae (pollen baskets) and the abdominal glands to produce wax. They have a harder exoskeleton, longer sting, and larger ovaries than nest-establishing *Bombus* species.

HEAD Both males and females have a thick head with black hairs on the face and yellow hairs on the vertex.

THORAX This species has yellow hairs on the thorax. Some females have a black spot on the thorax. Males have a black band between the wing bases.

ABDOMEN Females have black abdomens or yellow hairs on the lateral edges of the third tergite (T3). Occasionally, there may be additional yellow hairs on T1 and T2. Males have yellow hairs on T1-T3, and black hairs on T4-T7.

SIZE RANGE



Photos: Heather Holm

Bumble bee illustrations: Elaine Evans/Xerces Society



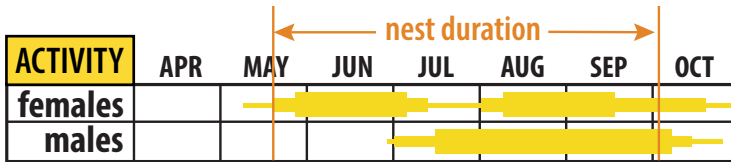
To learn more, visit www.BeesMN.org

Bombus citrinus

Lemon Cuckoo Bumble Bee



Bombus citrinus females lack corbiculae (pollen baskets) and do not collect pollen. They frequent flowering plants in the mint family (Lamiaceae). Males can be found visiting a variety of flowering plants in the family Asteraceae as well as plants in the genus *Verbena*.



Agastache foeniculum



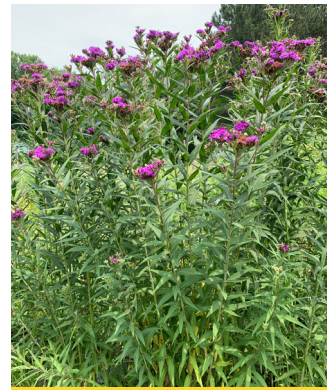
Asclepias syriaca



Pycnanthemum virginianum



Veronicastrum virginicum



Vernonia fasciculata



Verbena hastata



Eutrochium purpureum



Eryngium yuccifolium

JUNE
JULY
AUGUST
OCTOBER

| EARLY TO MID-SUMMER | |
|---------------------------------|------------------------|
| <i>Viola sororia</i> | Common Blue Violet |
| <i>Geranium maculatum</i> | Wild Geranium |
| <i>Hydrophyllum virginianum</i> | Virginia Waterleaf |
| <i>Rubus occidentalis</i> | Black Raspberry |
| <i>Blephilia hirsuta</i> | Hairy Woodmint |
| <i>Angelica purpurea</i> | Angelica |
| <i>Asclepias tuberosa</i> | Butterfly Milkweed |
| <i>Agastache foeniculum</i> | Anise Hyssop |
| <i>Monarda fistulosa</i> | Wild Bergamot |
| <i>Physocarpus opulifolius</i> | Ninebark |
| <i>Verbena stricta</i> | Hoary Vervain |
| <i>Asclepias syriaca</i> | Common Milkweed |
| <i>Allium cernuum</i> | Nodding Onion |
| <i>Pycnanthemum virginianum</i> | Virginia Mountain Mint |
| <i>Veronicastrum virginicum</i> | Culver's Root |
| <i>Monarda punctata</i> | Dotted Horsemint |
| <i>Asclepias incarnata</i> | Swamp Milkweed |
| <i>Dalea villosa</i> | Silky Prairie Clover |
| <i>Vernonia fasciculata</i> | Common Ironweed |
| <i>Heliopsis helianthoides</i> | False Sunflower |
| <i>Verbena hastata</i> | Blue Vervain |
| <i>Silphium perfoliatum</i> | Cup Plant |
| LATE SUMMER-AUTUMN | |
| <i>Rudbeckia hirta</i> | Black-eyed Susan |
| <i>Eupatorium perfoliatum</i> | Common Boneset |
| <i>Eutrochium purpureum</i> | Sweet Joe Pye Weed |
| <i>Cirsium discolor</i> | Pasture Thistle |
| <i>Eryngium yuccifolium</i> | Rattlesnake Master |
| <i>Lobelia siphilitica</i> | Blue Lobelia |
| <i>Liatris aspera</i> | Rough Blazing Star |
| <i>Physostegia virginiana</i> | Obedient Plant |
| <i>Solidago, Euthamia</i> | Goldenrods |
| <i>Symphytotrichum</i> | Asters |

Photos: Heather Holm