



To learn more, visit www.BeesMN.org

Bombus impatiens

Common Eastern Bumble Bee

Bombus impatiens is one of the top five most commonly observed bumble bees in Minnesota. Gynes (new queens) hibernate in shallow burrows in the ground.

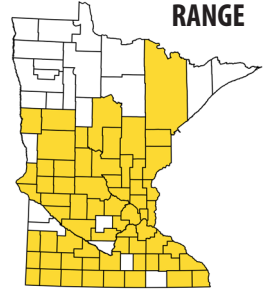
CONSERVATION STATUS

S5 secure

NEST

belowground
rodent/mammal
burrows

RANGE

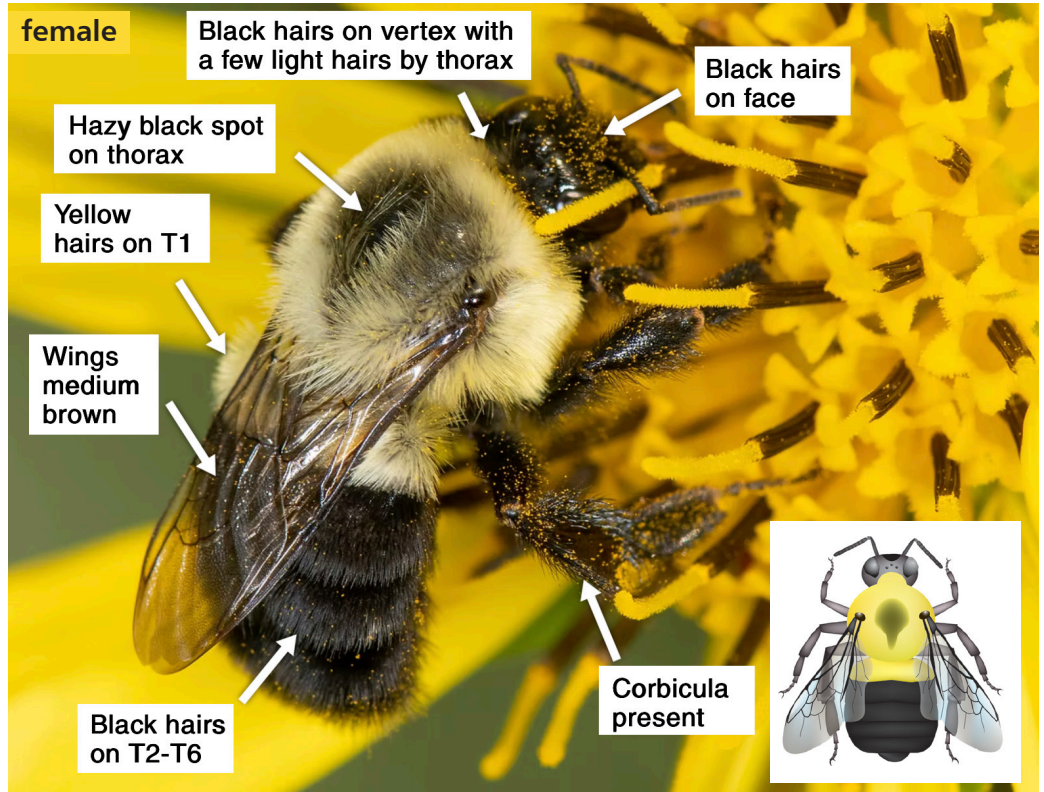


CHARACTERISTICS

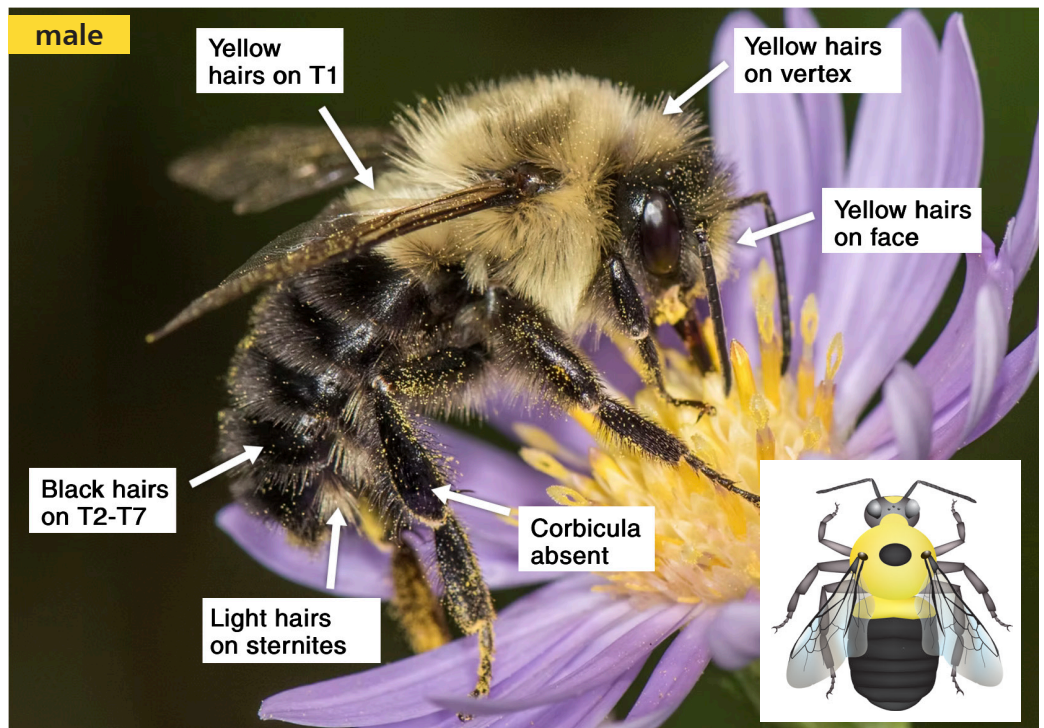
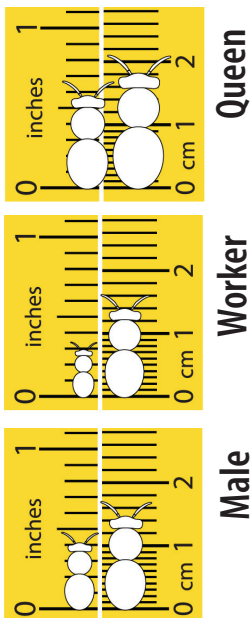
HEAD Males have yellow hairs on the vertex (back of the head or "neck"), females have black hairs with light hairs intermixed on the vertex.

THORAX *Bombus impatiens* has a light yellow hairs on the thorax with a central hazy black spot (females) or more defined black spot (males). Males and females have medium to light brown wings.

ABDOMEN The first abdominal tergite (T1) has yellow hairs, the remaining tergites have black hairs.



SIZE RANGE



Photos: Heather Holm

Bumble bee illustrations: Elaine Evans/Xerces Society



To learn more, visit www.BeesMN.org

Bombus impatiens

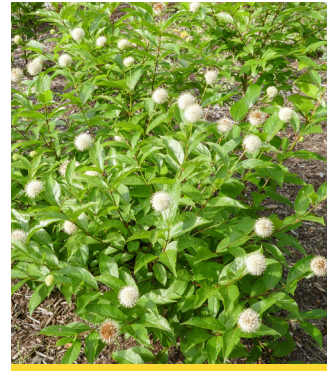
Common Eastern Bumble Bee



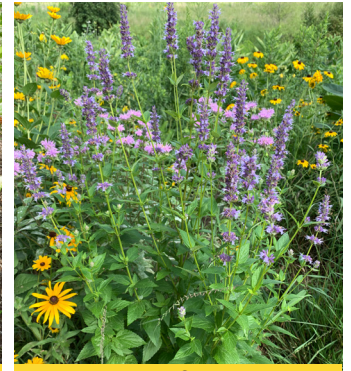
ACTIVITY	APR	MAY	JUN	JUL	AUG	SEP	OCT
queens	← nest duration →						
workers	← nest duration →						
males			← nest duration →				
gynes			← nest duration →				

Bombus impatiens is a medium-tongued bumble bee species that visits both open and complexly-shaped flowers.

SPRING	
APRIL	<i>Hydrophyllum virginianum</i> Virginia Waterleaf
	<i>Rosa blanda</i> Smooth Wild Rose
	<i>Rubus occidentalis</i> Black Raspberry
	<i>Staphylea trifolia</i> American Bladdernut
	<i>Lupinus perennis</i> Wild Lupine
	<i>Lithospermum canescens</i> Hoary Puccoon
	<i>Geranium maculatum</i> Wild Geranium
	<i>Penstemon grandiflorus</i> Large-flowered Beardtongue
	<i>Scrophularia lanceolata</i> Lance-leaved Figwort
	<i>Blephilia hirsuta</i> Hairy Woodmint
EARLY TO MID-SUMMER	
MAY	<i>Asclepias tuberosa</i> Butterfly Milkweed
	<i>Dalea villosa</i> Silky Prairie Clover
	<i>Dalea purpurea</i> Purple Prairie Clover
	<i>Cephalanthus occidentalis</i> Buttonbush
	<i>Agastache foeniculum</i> Anise Hyssop
	<i>Oenothera rhombipetala</i> Fourpoint Evening Primrose
	<i>Monarda fistulosa</i> Wild Bergamot
	<i>Verbena stricta</i> Hoary Vervain
	<i>Monarda punctata</i> Dotted Horsemint
	<i>Diervilla lonicera</i> Bush Honeysuckle
	<i>Allium cernuum</i> Nodding Onion
	<i>Pycnanthemum virginianum</i> Virginia Mountain Mint
	<i>Veronicastrum virginicum</i> Culver's Root
	<i>Chamaecrista fasciculata</i> Partridge Pea
	<i>Vernonia fasciculata</i> Common Ironweed
JUNE	<i>Heliopsis helianthoides</i> False Sunflower
	<i>Verbena hastata</i> Blue Vervain
	<i>Silphium perfoliatum</i> Cup Plant
	LATE SUMMER-AUTUMN
JULY	<i>Eurybia macrophylla</i> Big-leaved Aster
	<i>Eupatorium perfoliatum</i> Common Boneset
	<i>Eutrochium purpureum</i> Sweet Joe Pye Weed
	<i>Cirsium discolor</i> Pasture Thistle
	<i>Liatrias aspera</i> Rough Blazing Star
	<i>Lobelia siphilitica</i> Blue Lobelia
	<i>Helianthus</i> Sunflowers
	<i>Nabalus albus</i> White Rattlesnake-root
	<i>Chelone glabra</i> White Turtlehead
	<i>Physostegia virginiana</i> Obedient Plant
	<i>Gentiana andrewsii</i> Bottle Gentian
	<i>Helenium autumnale</i> Sneezeweed
	<i>Solidago, Euthamia</i> Goldenrods
	<i>Symphyotrichum</i> Asters
	AUGUST
OCTOBER	



Cephalanthus occidentalis



Agastache foeniculum



Cirsium discolor



Verbena hastata



Monarda fistulosa



Pycnanthemum virginianum



Solidago rigida



Gentiana andrewsii